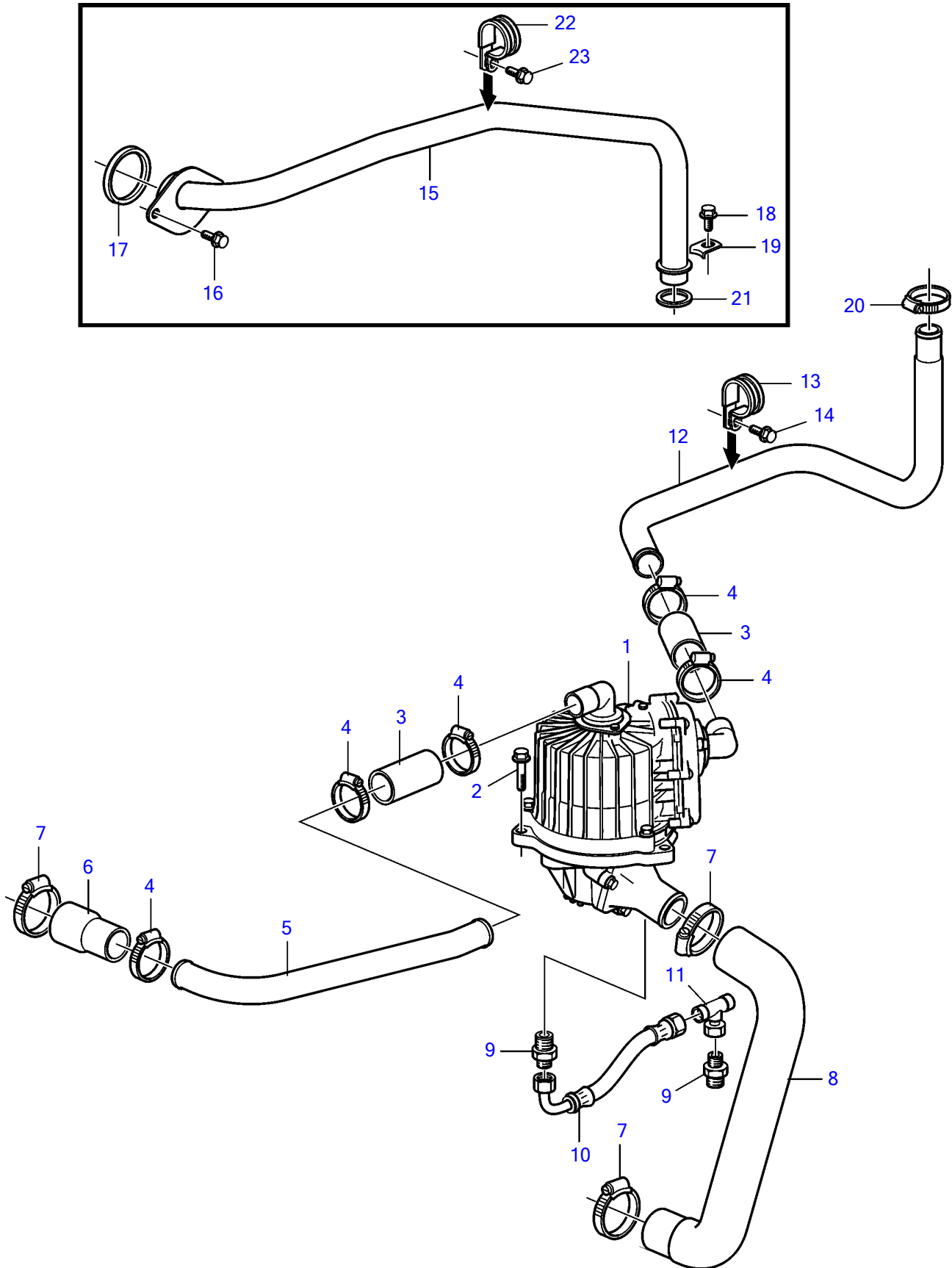


D16C-A MH, D16C-B MH, D16C-C MH



D16C-A MH, D16C-B MH, D16C-C MH

REF	PART NO.	QTY	DESCRIPTION	NOTES
1	3888896	1	Oil separator	(3588982)
2	946671	3	Flange screw	
3	3808202	2	Hose	
4	853548	6	Hose clamp	
5	3841308	1	Oil pipe	
6	3883803	1	Hose	
7	961670	3	Hose clamp	
8	3588968	1	Hose	
9	991057	2	Nipple	
10	3819763	1	Oil hose	
11	944525	1	T-nipple	
12	3807828	1	Evacuation pipe	
13	952637	1	Clamp	
14	944926	1	Flange screw	
15	3595212	1	Oil pipe	(3841349)
16	946173	2	Flange screw	
17	20723207	1	Sealing ring	
18	944926	1	Flange screw	
19		1	Lock brace	
20	853548	1	Hose clamp	
21	1543578	1	Sealing ring	
22	952637	1	Clamp	
23	944926	1	Flange screw	