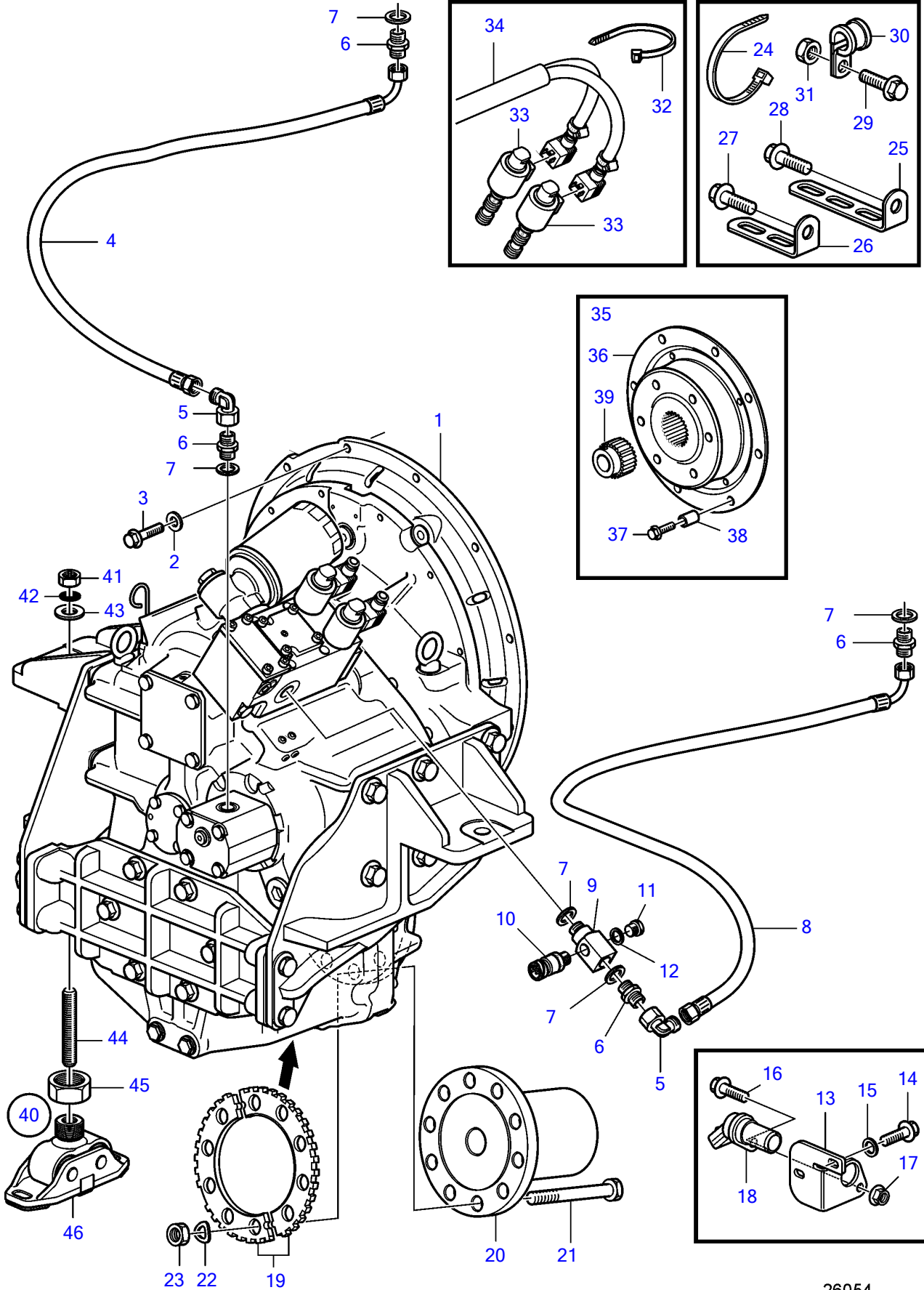


D13B-B MP



Upd:2012-02-08

26054

26054

7749490-44-36116

D13B-B MP

REF	PART NO.	QTY	DESCRIPTION	NOTES
1		1	Reversing gear	Ratio 1.48:1
		1	Reversing gear	Ratio 1.73:1
		1	Reversing gear	Ratio 2.03:1
2	941908	10	Spring washer	
3	965185	10	Flange screw	
4	21322361	1	Oil hose	
5	946369	2	Elbow nipple	
6	943986	4	Nipple	
7	976932	5	Gasket	
8	21386719	1	Oil hose	
9	3828349	1	X-nipple	
10	874313	1	Sensor, pressure/temp	
11	960632	1	Plug	
12	976931	1	Gasket	
13	3841424	1	Bracket	
14	967949	1	Flange screw	
15	949607	1	Spring washer	
16	946544	1	Flange screw	
17	949278	1	Flange lock nut	
18	20513343	1	Sensor	
19	3841413	2	Sprocket wheel	
20	(864087)	1	Clutch flange	Obsolete part
21	980253	10	Hexagon screw	
22	941913	10	Spring washer	
23	943674	10	Lock nut	
24	1075407	X	Cable tie	
25	965562	1	Bracket	
26	965558	1	Bracket	
27		1	Screw	
28		1	Screw	
29	946173	3	Flange screw	
30	945081	3	Clamp	
31	945408	3	Flange nut	
32	948211	X	Cable tie	
33	3831157	2	Solenoid	
34	40005751	1	Wiring harness	
35	21532612	1	Flexible coupling	
36	21532585	1	Flexible coupling	
37	965226	8	Flange screw	
38	849513	8	Spacer sleeve	
39	21581531	1	Hub	
40	3843493	2	Rubber cushion kit	
41	955786	1	• Hexagon nut	
42	847766	1	• Lock washer	
43	120224	1	• Washer	
44		1	• Adjusting screw	
45	3839409	1	• Nut	
46		1	• Bracket	