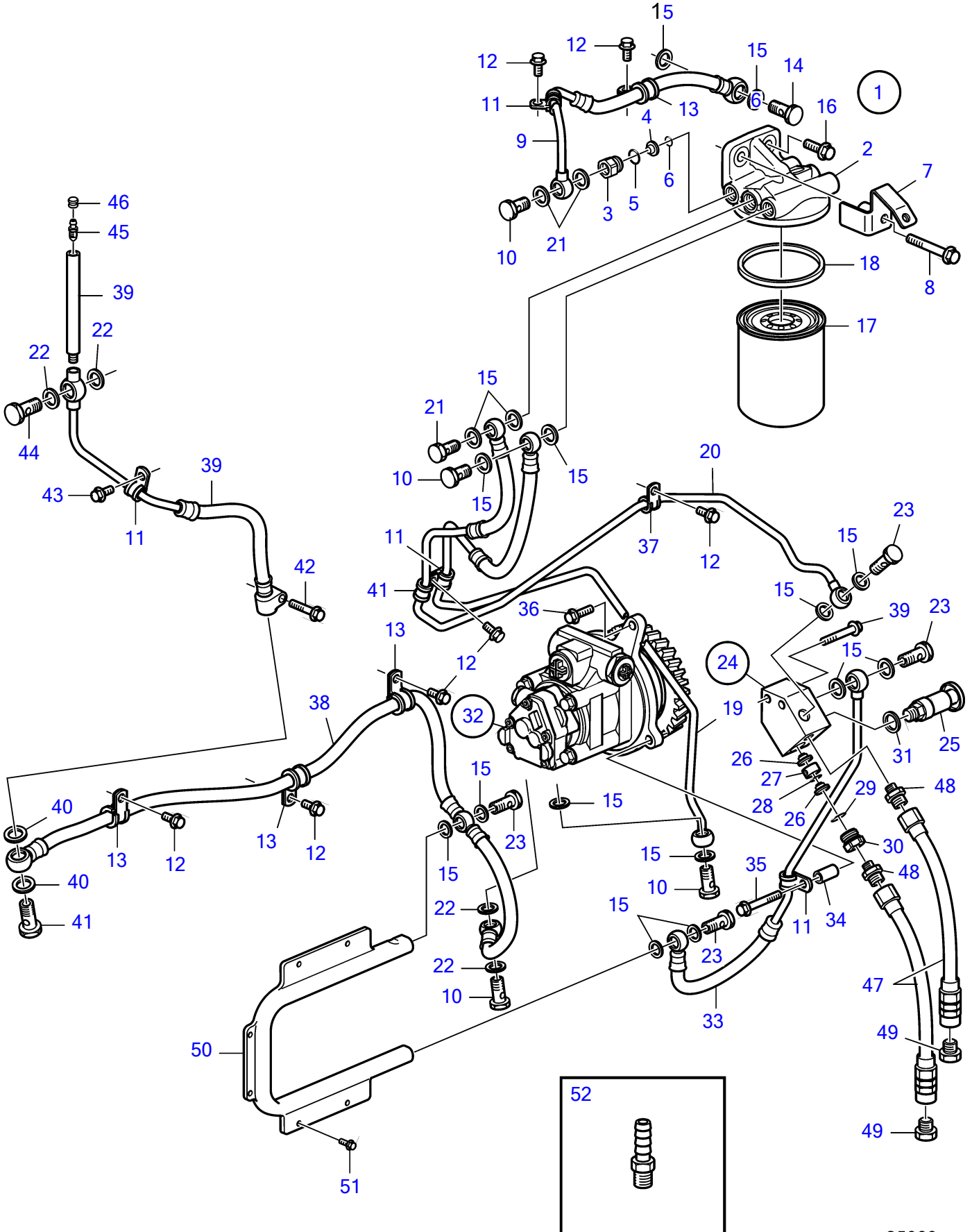


D13B-C MP, D13B-D MP



D13B-C MP, D13B-D MP

REF	PART NO.	QTY	DESCRIPTION	SEE SEC.	NOTES
1	3849120	1	Fuel filter housing		
2	3849120	1	• Fuel filter housing		
3	21140340	1	• Nipple		
4	21113993	1	• Check valve		
5	1526474	1	• O-ring		
6	976971	1	• O-ring		
7	21168135	1	Bracket, cover		
8	965188	1	Flange screw		
9	3889701	1	Fuel hose		
10	991046	4	Hollow screw		
11	942542	4	Clamp		
12	946440	7	Flange screw		
13	949747	5	Clamp		
14	190713	1	Hollow screw		
15	20852764	18	Sealing ring		
16	946472	1	Flange screw		
17	3888460	1	Fuel filter		
18			• Gasket		
19	21385273	1	Air vent hose		
20	3889682	1	Fuel pipe		
21	3594288	1	Valve		
22	982724	4	Gasket		
23	991048	4	Hollow screw		
24	3889704	1	Housing		
25	3837393	1	• Hand pump		
26	244834	2	• Valve		
27	8148331	1	• Spacer sleeve		
28	976971	1	• O-ring		
29	1526474	1	• O-ring		
30	21168724	1	• Nipple		
31	947622	1	• Gasket		
32	21635801	1	Fuel pump		
			•	35836	
33	21163011	1	Fuel hose		
34	843075	1	Spacer sleeve		
35	965216	1	Flange screw		
36	965216	1	Flange screw		L=55mm
	946671	2	Flange screw		L=30mm
37	942400	3	Clamp		
38	21280354	1	Fuel hose		
39	21280354	1	Fuel hose		
40	20852765	2	• Sealing ring		
41	21088049	1	• Overflow valve		
42	947760	1	Flange screw		
43	947107	1	Flange screw		
44	991046	1	Hollow screw		
45	20548012	1	Faucet		
46	20547976	1	Protecting cover		
47	3826595	2	Fuel hose		
48	977677	2	Nipple		
49	22753	2	Nipple		
50	20562394	1	Radiator		
51	948746	6	Flange screw		
52	3825000	2	Hose nipple		