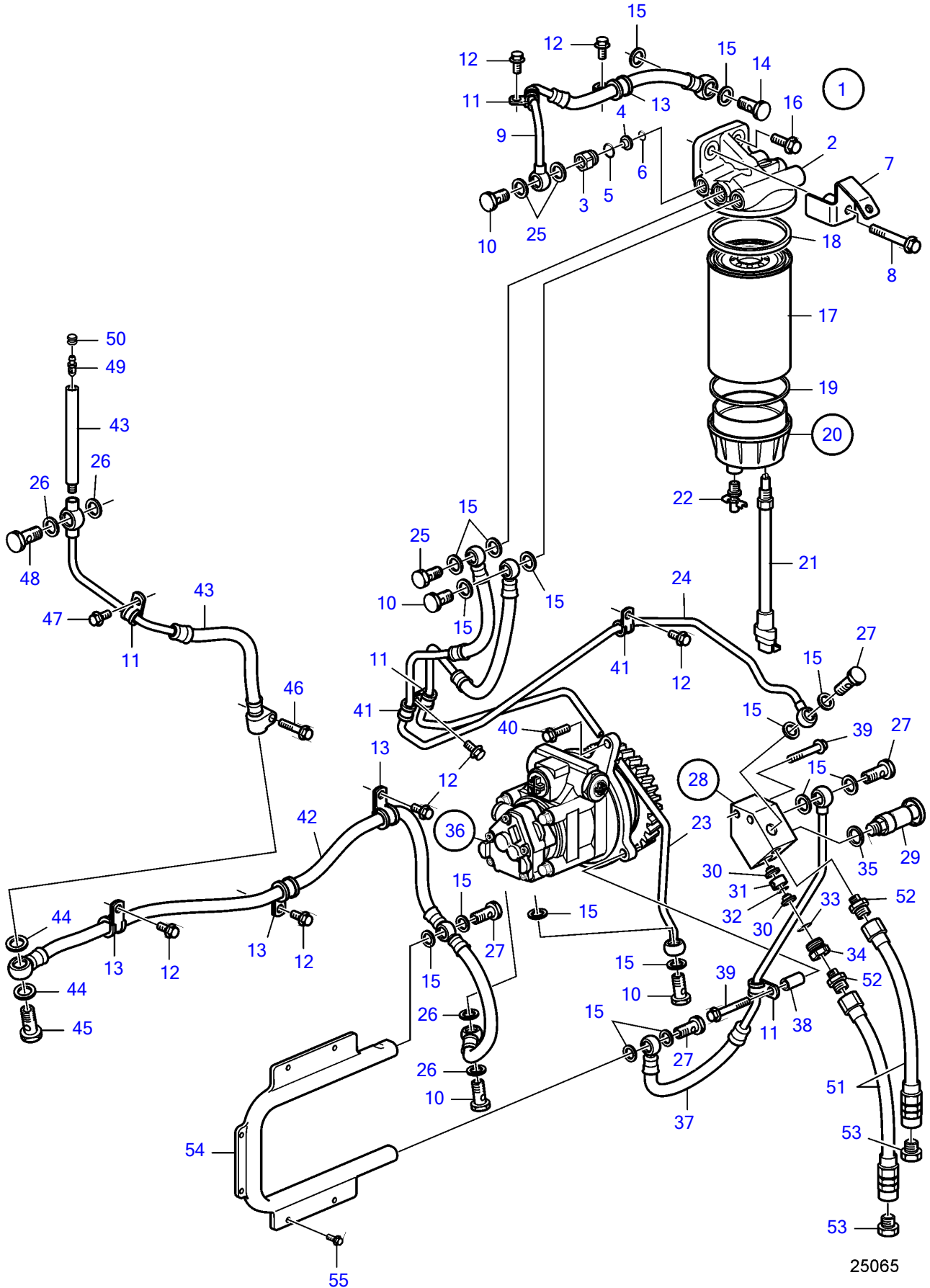


D13B-A MP, D13B-B MP, D13B-G MP, D13B-H MP



25065

D13B-A MP, D13B-B MP, D13B-G MP, D13B-H MP

REF	PART NO.	QTY	DESCRIPTION	SEE SEC.	NOTES
1	3849120	1	Fuel filter housing		
2	3849120	1	• Fuel filter housing		
3	21140340	1	• Nipple		
4	21113993	1	• Check valve		
5	1526474	1	• O-ring		
6	976971	1	• O-ring		
7	21168135	1	Bracket, cover		
8	965188	1	Flange screw		
9	3889701	1	Fuel hose		
10	991046	4	Hollow screw		
11	942542	4	Clamp		
12	946440	7	Flange screw		
13	949747	5	Clamp		
14	190713	1	Hollow screw		
15	20852764	18	Sealing ring		
16	946472	1	Flange screw		
17	3809721	1	Fuel filter insert		
18			• Gasket		
19		1	• Gasket		
20	21283474	1	• Bowl		
21	3885070	1	• Sensor		
22	21279867	1	• Drain valve		
23	21385273	1	Air vent hose		
24	3889682	1	Fuel pipe		
25	3594288	1	Valve		
26	20852765	4	Sealing ring		
27	991048	4	Hollow screw		
28	3889704	1	Housing		
29	3837393	1	• Hand pump		
30	244834	2	• Valve		
31	8148331	1	• Spacer sleeve		
32	976971	1	• O-ring		
33	1526474	1	• O-ring		
34	21168724	1	• Nipple		
35	947622	1	• Gasket		
36	21635801	1	Fuel pump		
			•	35836	
37	21163011	1	Fuel hose		
38	843075	1	Spacer sleeve		
39	965216	1	Flange screw		
40	965216	1	Flange screw		L=55mm
	946671	2	Flange screw		L=30mm
41	942400	3	Clamp		
42	21280354	1	Fuel hose		
43	21280354	1	Fuel hose		
44	20852765	2	• Sealing ring		
45	21088049	1	• Overflow valve		
46	947760	1	Flange screw		
47	947107	1	Flange screw		
48	991046	1	Hollow screw		
49	20548012	1	Faucet		
50	20547976	1	Protecting cover		
51	3826595	2	Fuel hose		
52	977677	2	Nipple		
53	22753	2	Nipple		
54	20562394	1	Radiator		
55	948746	6	Flange screw		