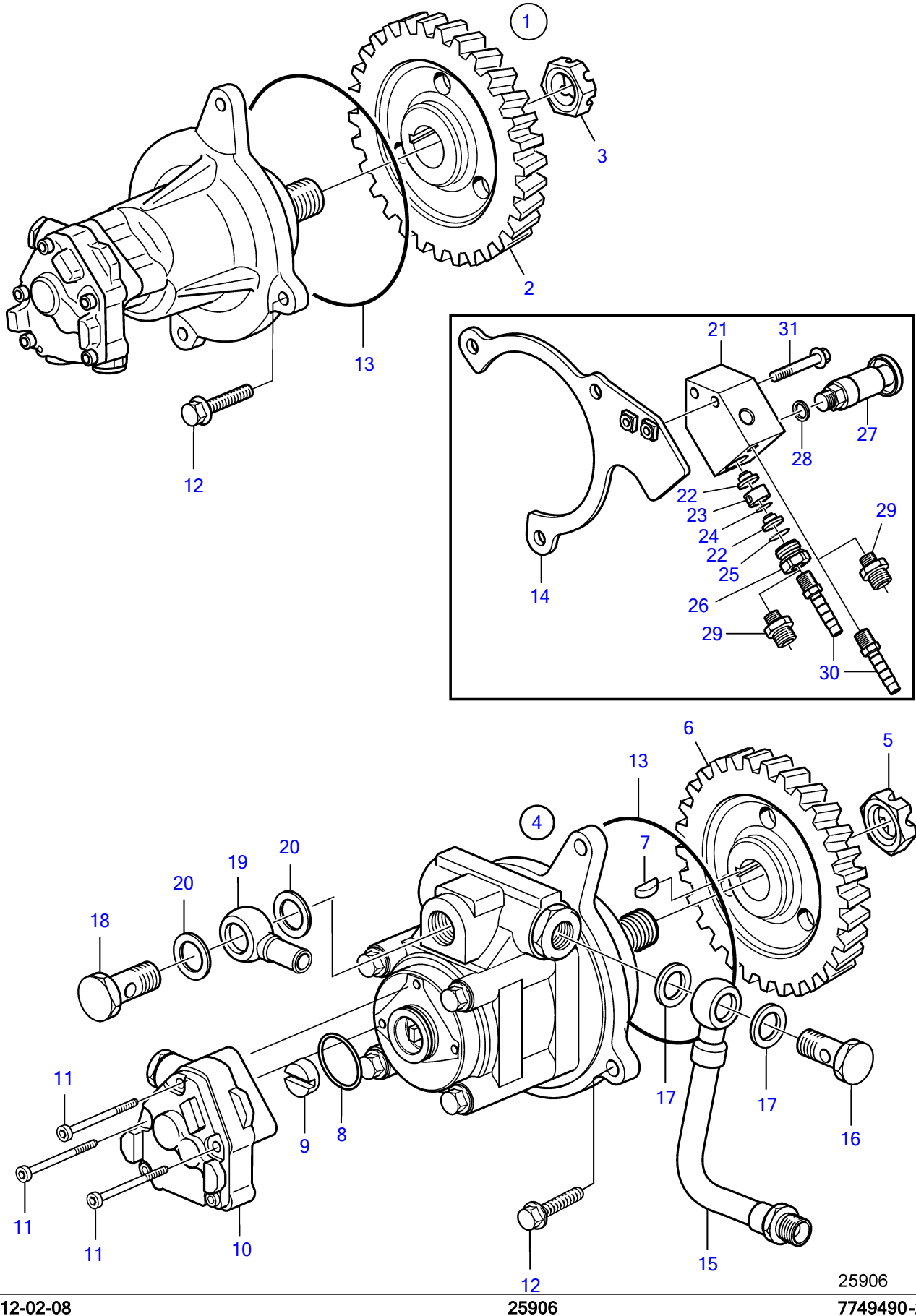


D13B-A MP, D13B-B MP, D13B-C MP, D13B-D MP



D13B-A MP, D13B-B MP, D13B-C MP, D13B-D MP

| REF | PART NO. | QTY | DESCRIPTION | NOTES |
|-----|----------|-----|------------------------|---------------------------------------|
| 1 | 21635801 | 1 | Fuel pump | Without servo pump., Compl, (3594872) |
| 2 | 8131292 | 1 | • Gear | |
| 3 | 20367040 | 1 | • Castle nut | |
| 4 | 20902698 | 1 | Tandem pump | With servo pump., Compl, (20482482) |
| 5 | 20367040 | 1 | • Castle nut | |
| 6 | 8131292 | 1 | • Gear | |
| 7 | 1505357 | 1 | • Woodruff key | |
| 8 | 85103703 | 1 | • O-ring | |
| 9 | 85103779 | 1 | • Constant velocity jo | |
| 10 | 20997341 | 1 | • Fuel pump | (85103778) |
| 11 | 85103780 | 3 | • Hex. socket screw | |
| 12 | 965216 | 1 | Flange screw | L=55mm |
| | 946671 | 2 | Flange screw | L=30mm |
| 13 | 977030 | 1 | O-ring | |
| 14 | 21559978 | 1 | Bracket | For engine without heat exchanger |
| 15 | 21406534 | 1 | Servo pipe | |
| 16 | 941686 | 1 | Hollow screw | |
| 17 | 982724 | 2 | Gasket | |
| 18 | 191620 | 1 | Hollow screw | |
| 19 | 1598185 | 1 | Banjo nipple | |
| 20 | 982508 | 2 | Gasket | |
| 21 | 3889704 | 1 | Housing | |
| 22 | 244834 | 2 | • Valve | |
| 23 | 8148331 | 1 | • Spacer sleeve | |
| 24 | 976971 | 1 | • O-ring | |
| 25 | 1526474 | 1 | • O-ring | |
| 26 | 21168724 | 1 | • Nipple | |
| 27 | 3837393 | 1 | Hand pump | |
| 28 | 947622 | 1 | Gasket | |
| 29 | 977677 | 2 | Nipple | |
| 30 | 3825000 | 2 | Hose nipple | |
| 31 | 965216 | 2 | Flange screw | |