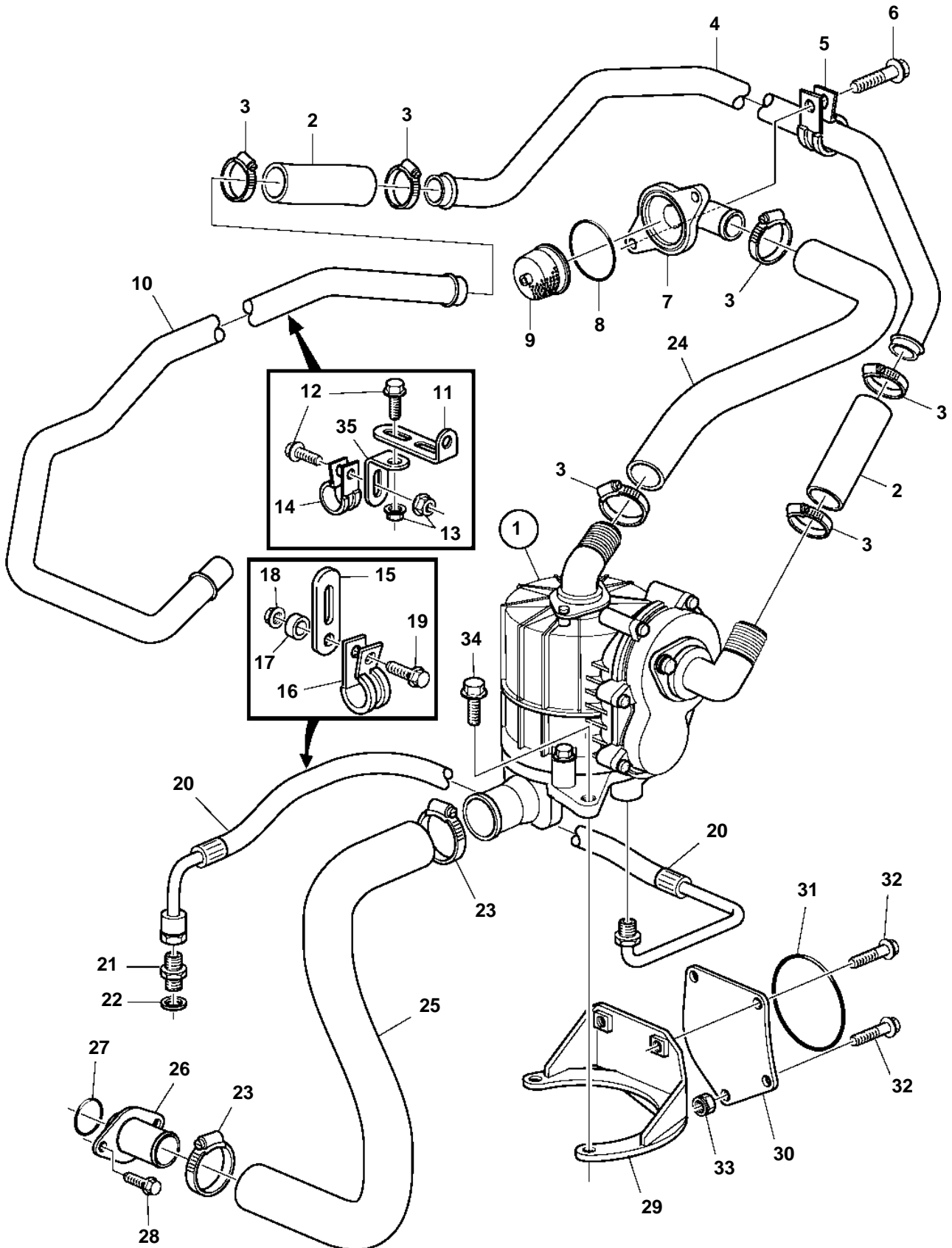


D12D-C MH, D12D-B MP, D12D-C MP, D12D-D MP



D12D-C MH, D12D-B MP, D12D-C MP, D12D-D MP

REF	PART NO.	QTY	DESCRIPTION	NOTES
1	3888808	1	Separator	(3885440)
2	973972	X	Hose	L=80mm
	973972	X	Hose	L=150mm
3	853548	6	Hose clamp	
4	3884143	1	Pipe	
5	947827	1	Clamp	
6		1	Screw	
7	3827462	1	Hose connection	
8	3165097	1	Sealing ring	
9	3165095	1	Strainer	
10	3883318	1	Pipe	
11	965562	2	Bracket	
12	946440	5	Flange screw	
13	945408	5	Flange nut	
14	947827	3	Clamp	
15	965540	1	Bracket	
16	949747	1	Clamp	
17	191172	1	Washer	
18	945408	1	Flange nut	
19	946440	1	Flange screw	
20	3588722	1	Oil hose	
21	984716	1	Nipple	
22	11994	1	Gasket	
23	961670	2	Hose clamp	
24	3587290	1	Hose	
25	3587291	1	Oil hose	
26	20462497	1	Connection pipe	
27	20555696	1	Sealing ring	(421629)
28	946440	2	Flange screw	
29	3587773	1	Bracket	
30	3587293	1	Cover	
31	948888	1	O-ring	
32	965197	4	Flange screw	
33	971096	1	Flange nut	
34	945444	3	Flange screw	
35	965553	2	Bracket	