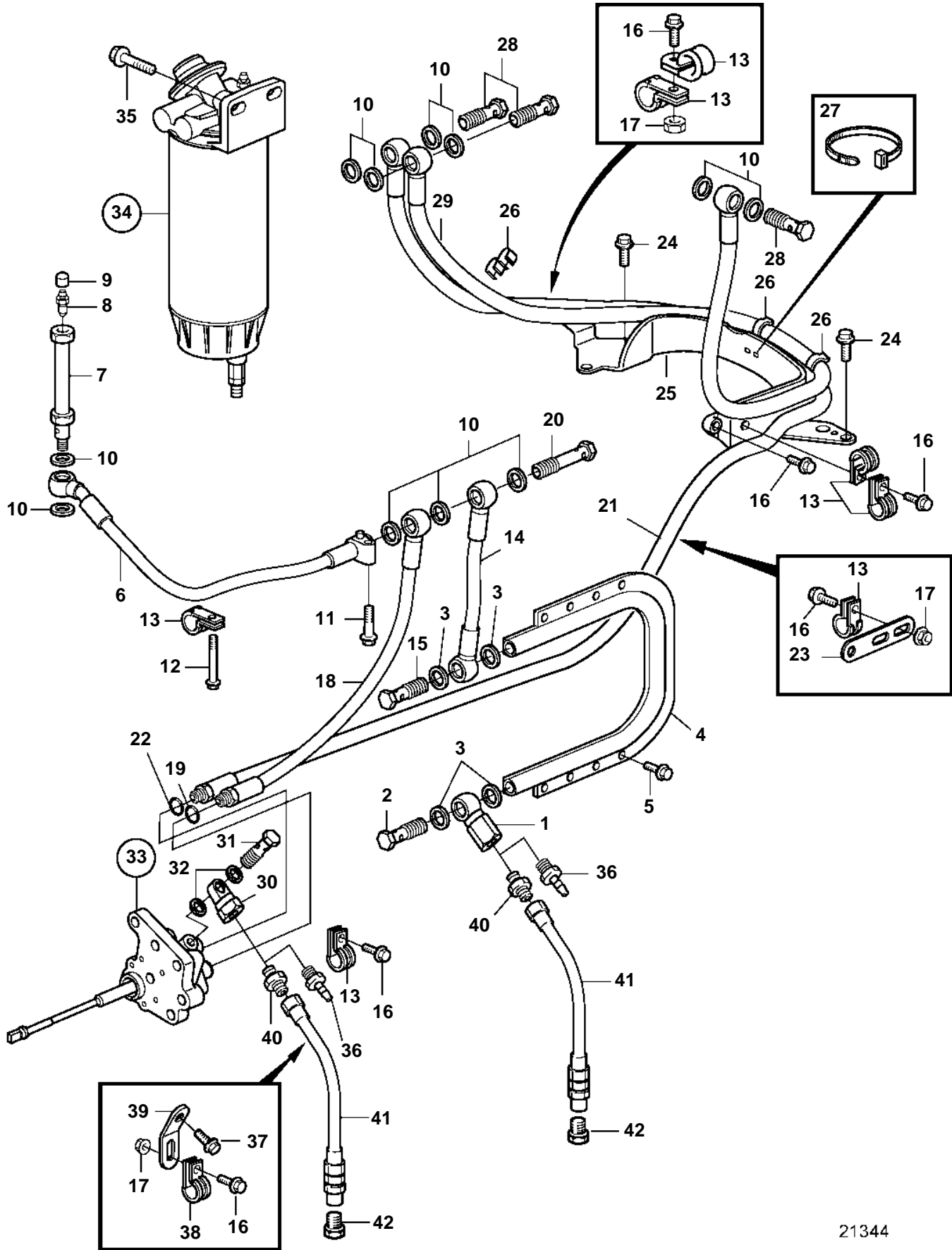


D12D-B MP



21344

D12D-B MP

REF	PART NO.	QTY	DESCRIPTION	SEE SEC.	NOTES
1	3828976	1	Check valve		
2	25167	1	Hollow screw		
3	969011	4	Gasket		
4	20562394	1	Radiator		For electronic control unit.
5	975979	6	6 point socket screw		
6	3838162	1	Fuel hose		
7	3828271	1	Hollow screw		
8	20548012	1	Faucet		(1330191)
9	20547976	1	Protecting cover		(656456)
10	11996	11	Gasket		
11	965183	1	Flange screw		
12	965181	1	Flange screw		
13	949747	7	Clamp		
14	3589256	1	Fuel hose		
15	25167	1	Hollow screw		
16	946440	6	Flange screw		
17	945408	3	Flange nut		
18	3826591	1	Fuel hose		
19	976971	1	· O-ring		
20	8148244	1	Hollow screw		
21	3837665	1	Fuel hose		
22	976971	1	· O-ring		
23	965541	1	Bracket		
24	946502	2	Flange screw		
25		1	Bracket		
26	9205207	3	Retainer		
27	948211	4	Cable tie		
28	190713	3	Hollow screw		
29	3837666	1	Fuel hose		
30	3827418	1	Banjo nipple		
31	74033	1	Hollow screw		
32	947620	2	Gasket		
33	3092460	1	Fuel pump		SN-240248, REPL BY 20440371
				21838	
	20440371	1	Fuel pump		SN240249-, REPL BY 20752310
				21839	
	20752310	1	Fuel pump		
				4621	
34	3817516	1	Fuel filter		EARLY TYPE, REPL BY 3885572
	3885572	1	Fuel filter		LATE TYPE
				35073	
35	946472	2	Flange screw		
36	3825000	2	Hose nipple		ALT
37	945444	1	Flange screw		
38	1545432	1	Clamp		
39	965571	1	Bracket		
40	977677	2	Nipple		ALT
41	3826595	2	Fuel hose		ALT
42	22753	2	Nipple		ALT