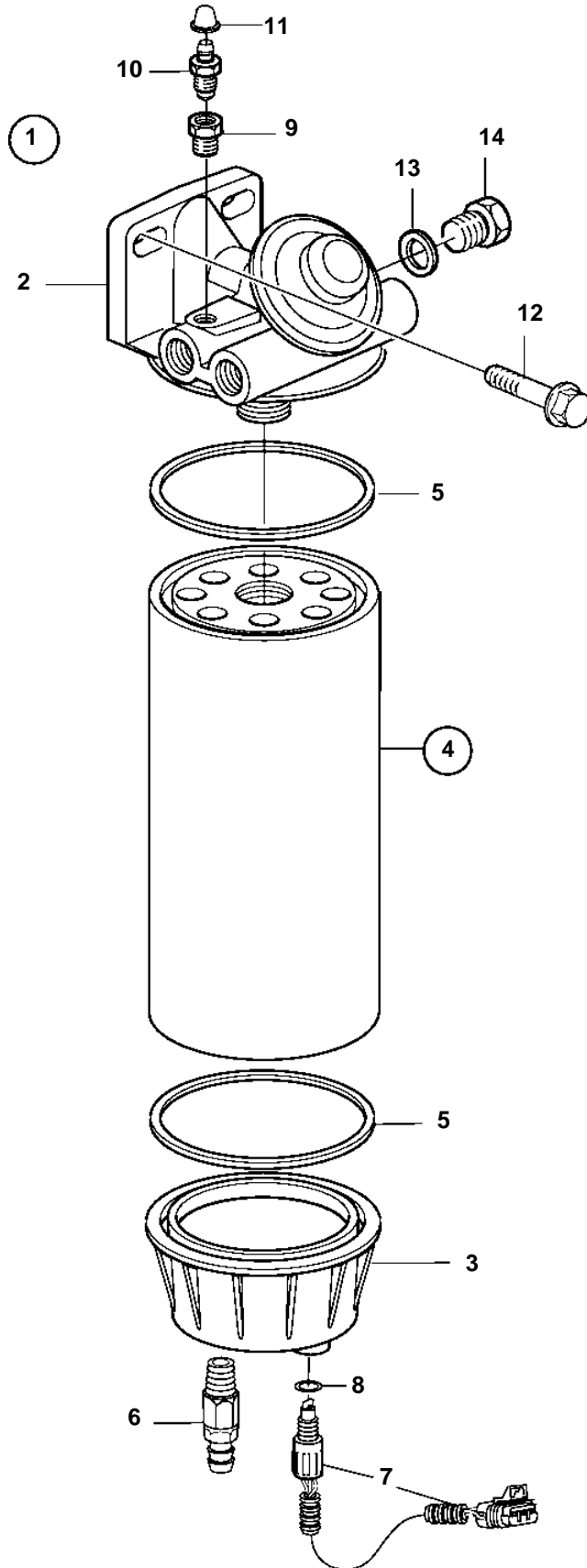


D12D-C MH, D12D-C MP, D12D-D MP



D12D-C MH, D12D-C MP, D12D-D MP

REF	PART NO.	QTY	DESCRIPTION	NOTES
1	3885572	1	Fuel filter	
2		1	· Filter housing	
3		1	· Bowl	
4	3817517	1	· Fuel filter kit	(3839469)
5		2	· · Gasket	
6	949918	1	· Shut-off cock	
7	3885070	1	· Sensor, water level	
8	3831094	1	· · O-ring	
9		1	· Nipple	
10	20548012	1	· Faucet	(1330191)
11	20547976	1	· Protecting cover	(656456)
12	946472	2	Flange screw	
13	11996	1	Gasket	
14	960631	1	Plug	