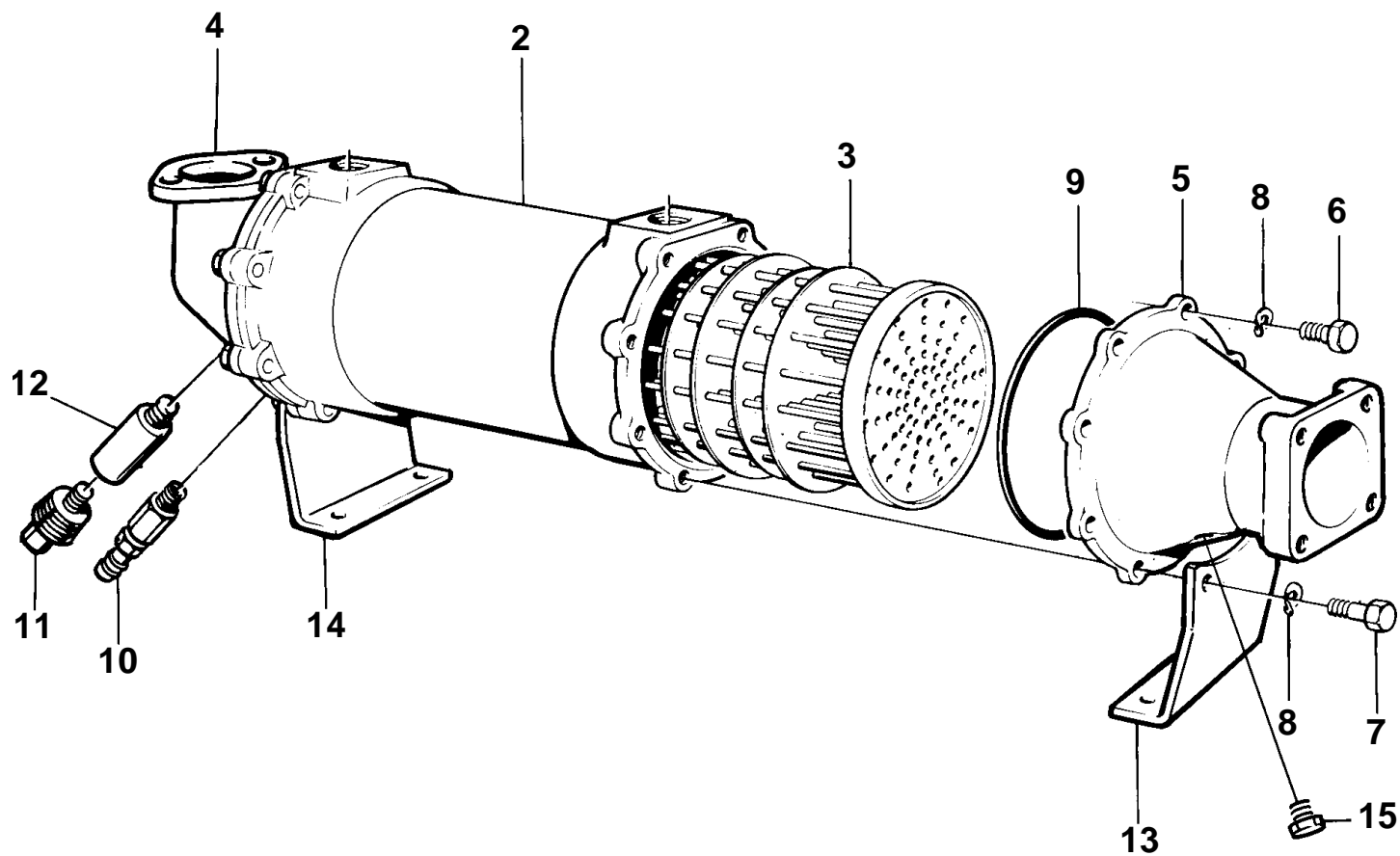


D12C-A MP, D12D-A MP, D12D-B MP

①



16792

D12C-A MP, D12D-A MP, D12D-B MP

REF	PART NO.	QTY	DESCRIPTION
1		1	Oil cooler
2	849618	1	• Housing
3	3825932	1	• Insert
4	843567	1	• End cover
5	3826210	1	• End cover
6	955514	12	• Hexagon screw
7	940117	4	• Hexagon screw
8	941906	16	• Spring washer
9	925027	2	• O-ring
10	949918	1	• Shut-off cock
11	838928	2	• Plug
12	838929	2	• Electrode
13		1	• Base
14		1	• Base
15	861551	1	• Plug