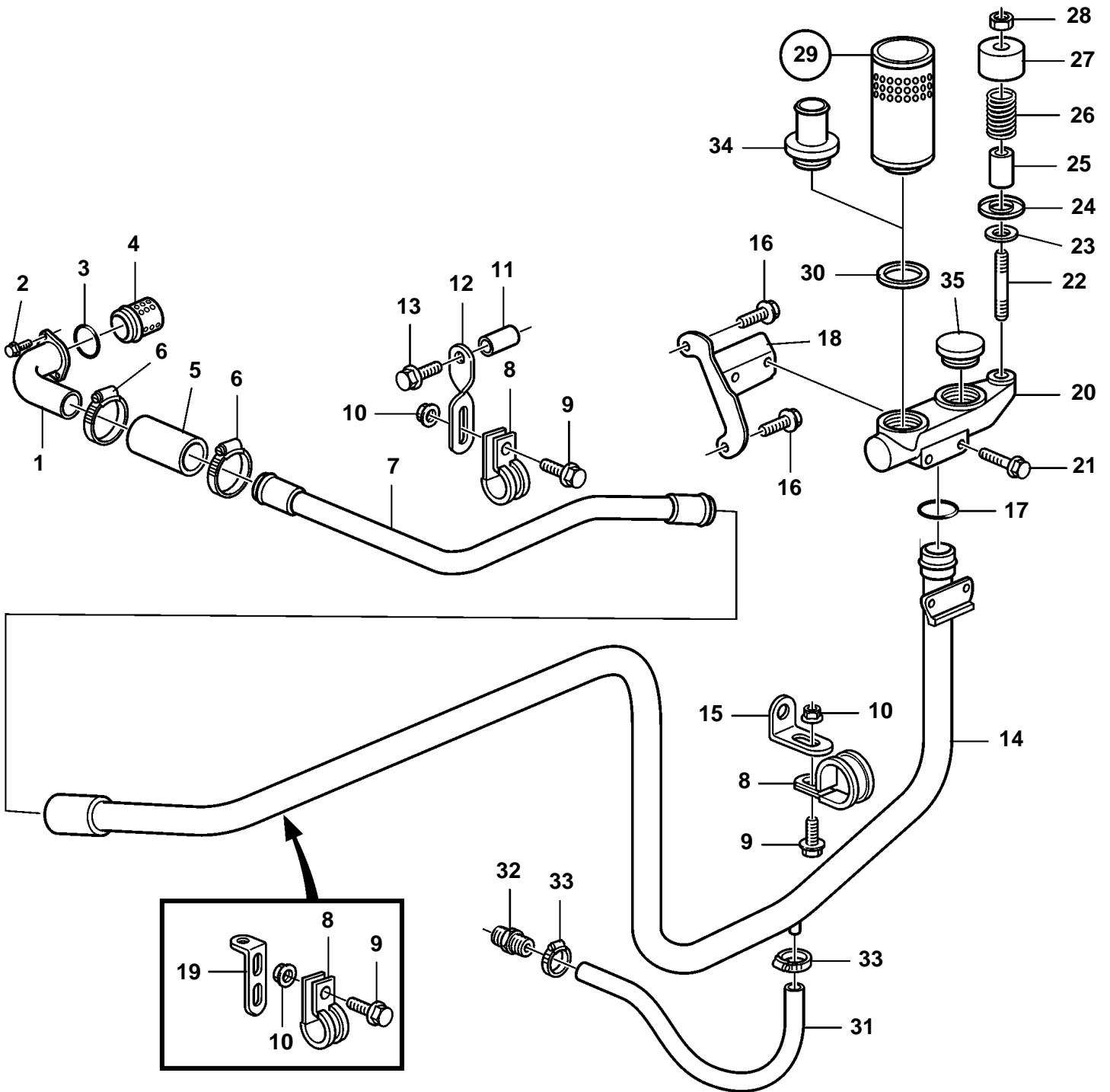


D12D-A MG, D12D-E MG



23641

## D12D-A MG, D12D-E MG

REF	PART NO.	QTY	DESCRIPTION	NOTES
1	3827462	1	Hose connection	
2	945444	2	Flange screw	
3	3165097	1	Sealing ring	
4	3165095	1	Strainer	
5	942707	X	Hose	L=100mm
6	961669	2	Hose clamp	
7	3835437	1	Tube	
8	947827	4	Clamp	
9	946440	4	Flange screw	
10	945408	4	Flange nut	
11	821540	1	Spacer sleeve	
12	1136551	1	Anchorage	
13	947760	1	Flange screw	
14	3838148	1	Tube	
15	965556	1	Bracket	
16	965185	2	Flange screw	
17	421158	1	Sealing ring	
18		1	Bracket	
19	965553	1	Bracket	
20	3826199	1	Connector housing	
21	965180	2	Flange screw	
22	924058	1	Stud	
23	421158	1	Sealing ring	
24	842972	1	Valve disc	
25	842974	1	Spacer sleeve	
26	843301	1	Spring	
27	842975	1	Protecting casing	
28	963105	1	Lock nut	
29	876069	2	Filter	
30	843449	2	· Gasket	
31	3524376	X	Hose	L=250mm
32	942722	1	Nipple	
33	961663	2	Hose clamp	
34	845260	1	Hose attachment	
35	3836106	1	Plug	Used when hose conection 845260 is mounted.