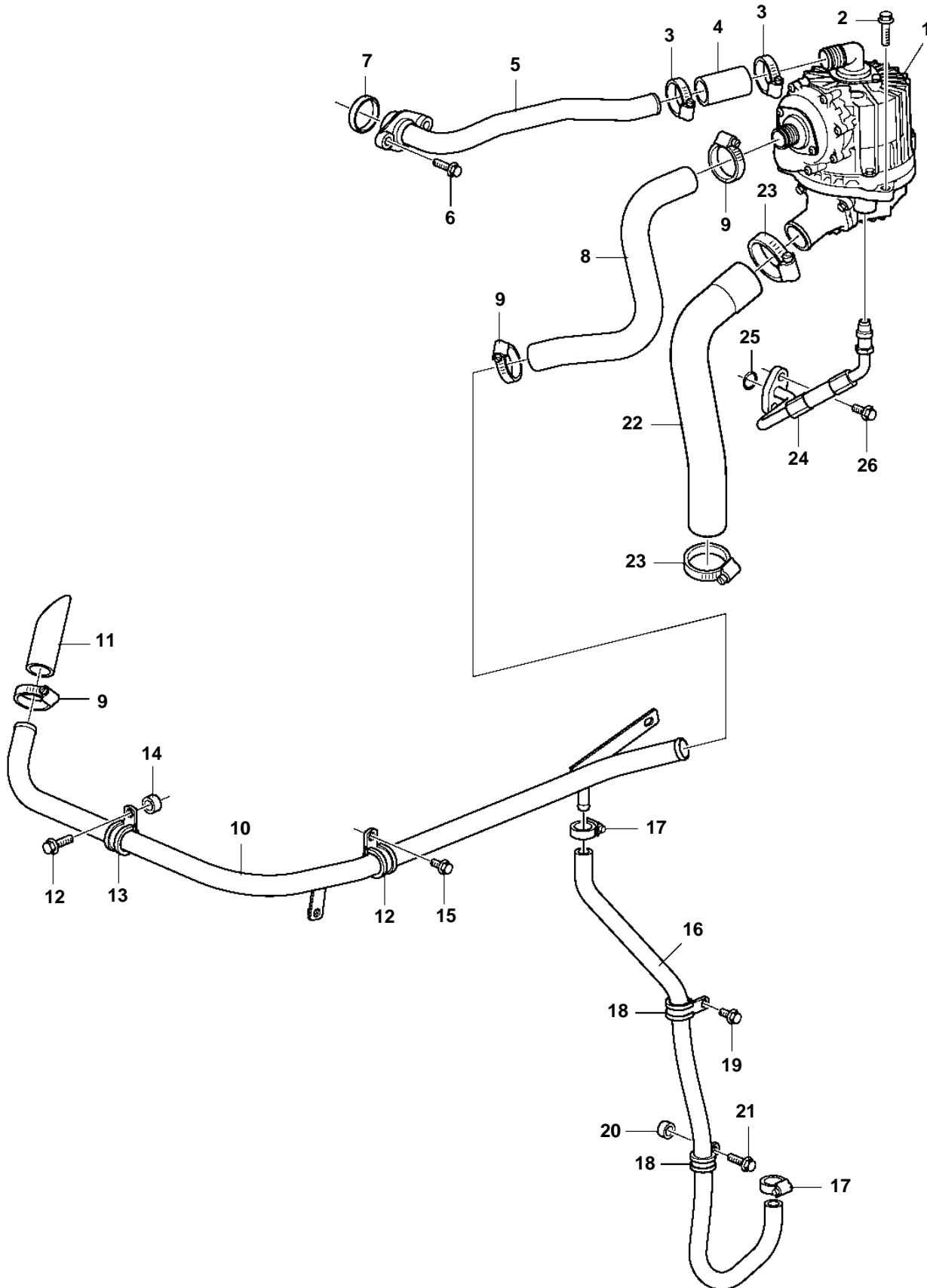


D11A-A, D11A-B, D11A-C



D11A-A, D11A-B, D11A-C

REF	PART NO.	QTY	DESCRIPTION
1	20707295	1	Separator
2	946671	3	Flange screw
3	943477	2	Hose clamp
4		1	Hose
5	40005746	1	Pipe
6	945444	2	Flange screw
7	20555696	1	Sealing ring
8	3889437	1	Hose
9	943475	1	Hose clamp
10	21118819	1	Pipe
11	944386	1	Rubber hose
12	946329	2	Flange screw
13	946329	1	Flange screw
14	977412	1	Spacer sleeve
15	946440	1	Flange screw
16	943707	1	Hose
17	943471	2	Hose clamp
18	1545432	2	Clamp
19	946440	1	Flange screw
20	948871	1	Spacer washer
21	945444	1	Flange screw
22	3886236	1	Hose
23	943475	2	Hose clamp
24	3886489	1	Oil hose
25	968007	1	O-ring
26	946173	2	Flange screw