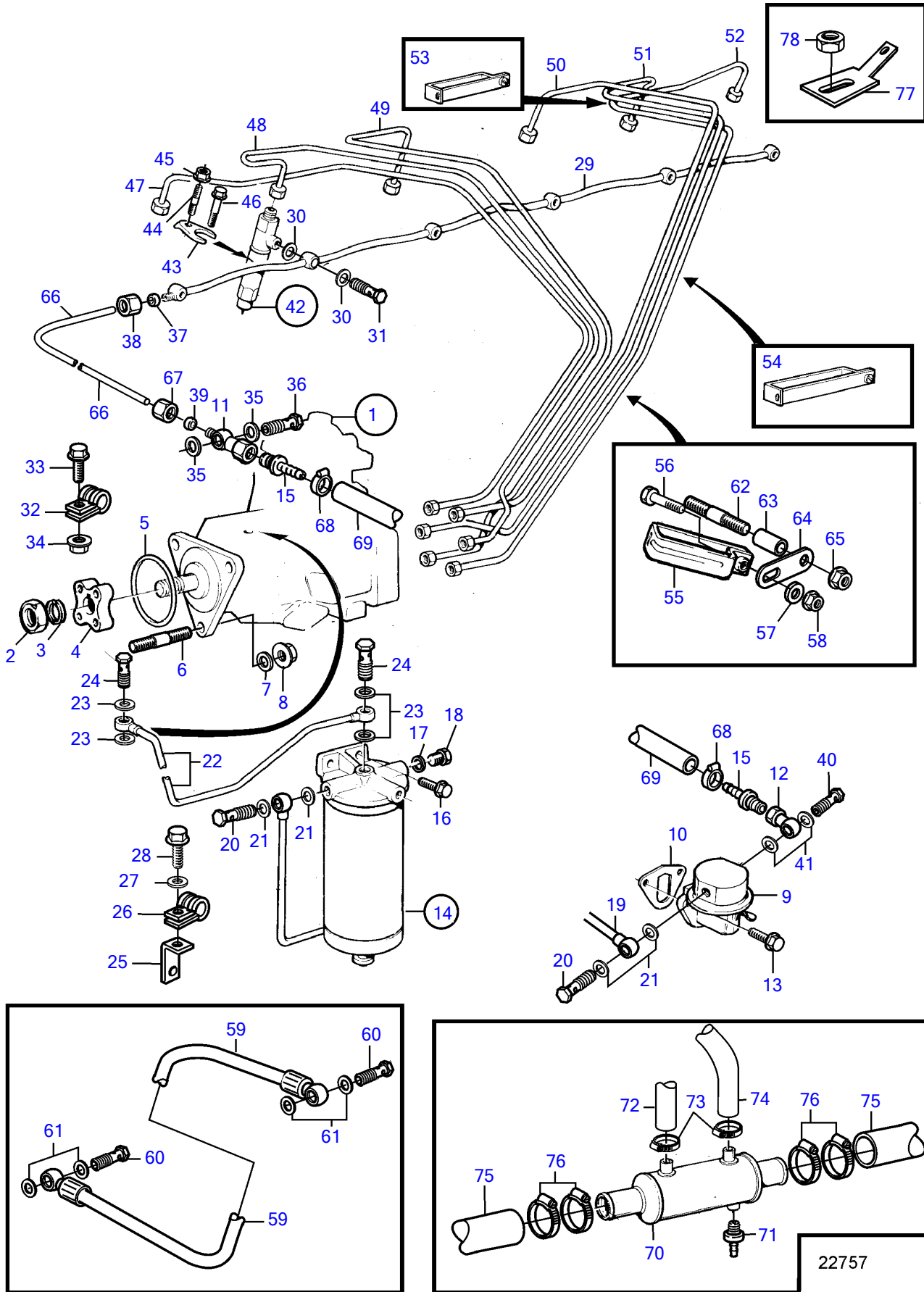


AD41L-A, AD41P-A



Upd:2011-09-28

22757

7742700-23-9381

AD41L-A, AD41P-A

REF	PART NO.	QTY	DESCRIPTION	SEE SEC.	NOTES
1	(861765)	1	Injection pump		AD41P-A, Obsolete part
			.		
			.	1893	
	860270	1	Injection pump		Product no. 869054, AD41P-A
			.		
			.	1888	
	861102	1	Injection pump		Product no. 869033, 869048,869134, AD41P-A, SN-2204153071
			.		Repl by 3581433
			.		
			.	1778	
	3581433	1	Injection pump		AD41P-A, SN2204153072-
			. parts not sold separately		
	861316	1	Injection pump		AD41L-A, SN-2204160725
			.		
			.	1781	
	3581433	1	Injection pump		AD41L-A, SN2204160726-
			. parts not sold separately		
2	955804	1	Hexagon nut		Included in fuel injection pump.
3	955925	1	Spring washer		Included in fuel injection pump.
4	859601	1	Hub		
5	968971	1	O-ring		
6	953047	3	Stud		
7	191172	3	Washer		
8	945408	2	Flange nut		
		1	Hexagon nut		
9	3582310	1	Feed pump		
10	3501530	1	Gasket		
11	861080	1	Banjo nipple		
12	861079	1	Banjo nipple		
13	946173	2	Flange screw		
14	860873	1	Fuel filter		Repl by 3581542
			.		
			.	3722	
	3581542	1	Fuel filter		Repl by 3588380
			.		
			.	3722	
	3588380	1	Fuel filter		
			.		
			.	7765	
15	3825000	2	Hose nipple		
16	946329	2	Flange screw		
17	11994	1	Gasket		
18	960629	1	Plug		
19	860448	1	Fuel pipe		
20	969299	2	Hollow screw		
21	11994	4	Gasket		
22	838659	1	Fuel pipe		
23	11994	4	Gasket		
24	969299	2	Hollow screw		
25	846780	1	Bracket		
26	952624	1	Clamp		
27	955893	1	Washer		
28	948746	1	Flange screw		
29	838667	1	Leak-off line		
30	947620	12	Gasket		
31	74033	6	Hollow screw		
32	121563	1	Clamp		
33	946544	1	Flange screw		AD41P-A
34	945407	1	Flange nut		
35	11994	2	Gasket		
36		1	Hollow screw		Included in fuel injection pump.
37	956966	1	Ferrule		
38	956980	1	Fitting nut		

AD41L-A, AD41P-A

REF	PART NO.	QTY	DESCRIPTION	SEE SEC.	NOTES
39	956966	1	Ferrule		
40	969299	1	Hollow screw		
41	11994	2	Gasket		
42	861103	6	Injector		Product no. 869033, 869048,869134
	3803238	6	Injector, exch		Product no. 869033, 869048,869134
			.		
			.	572	
	859494	6	Injector		Product no. 869054
	3803235	6	Injector, exch		Product no. 869054
			.		
			.	925	
43	861728	6	Yoke		
44	980226	6	Stud		Early type
45	945408	6	Flange nut		Early type
46	946470	6	Flange screw		Late type
47	861148	1	Delivery pipe		Cyl no 1
48	838878	1	Pressure pipe		Cyl no 2
49	861149	1	Delivery pipe		Cyl no 3
50	838880	1	Pressure pipe		Cyl no 4
51	838881	1	Pressure pipe		Cyl no 5
52	838882	1	Delivery pipe		Cyl no 6
53	8194351	2	Clamp		2-pipe
54	8194352	3	Clamp		3-pipe
55	470184	1	Clamp		L=450mm
56	955275	1	Hexagon screw		
57	955893	2	Washer		
58	945407	1	Flange nut		
59	860131	1	Air vent hose		
60	74033	2	Hollow screw		
61	947620	4	Gasket		
62	984130	1	Stud		
63	833244	1	Spacer sleeve		
64	965534	1	Bracket		
65	945408	1	Flange nut		
66	3581450	1	Return line		
67	956980	1	Fitting nut		
68		2	Hose clamp		
69		X	Hose		
70	858541	1	Oil cooler		
71	949918	1	• Shut-off cock		
72	861057	1	Fuel hose		Return to fuel cooler., L=450mm
			• Bulletin P-23-4-4	P-23-4-4-EN	Fuel Hose P/N 861057
73	961664	2	Hose clamp		
74	861057	X	Fuel hose		Fuel cooler - fuel tank.
			• Bulletin P-23-4-4	P-23-4-4-EN	Fuel Hose P/N 861057
75	861738	X	Hose		
76	961669	4	Hose clamp		
77	944485	1	Cable terminal		
78	965483	1	Flange nut		