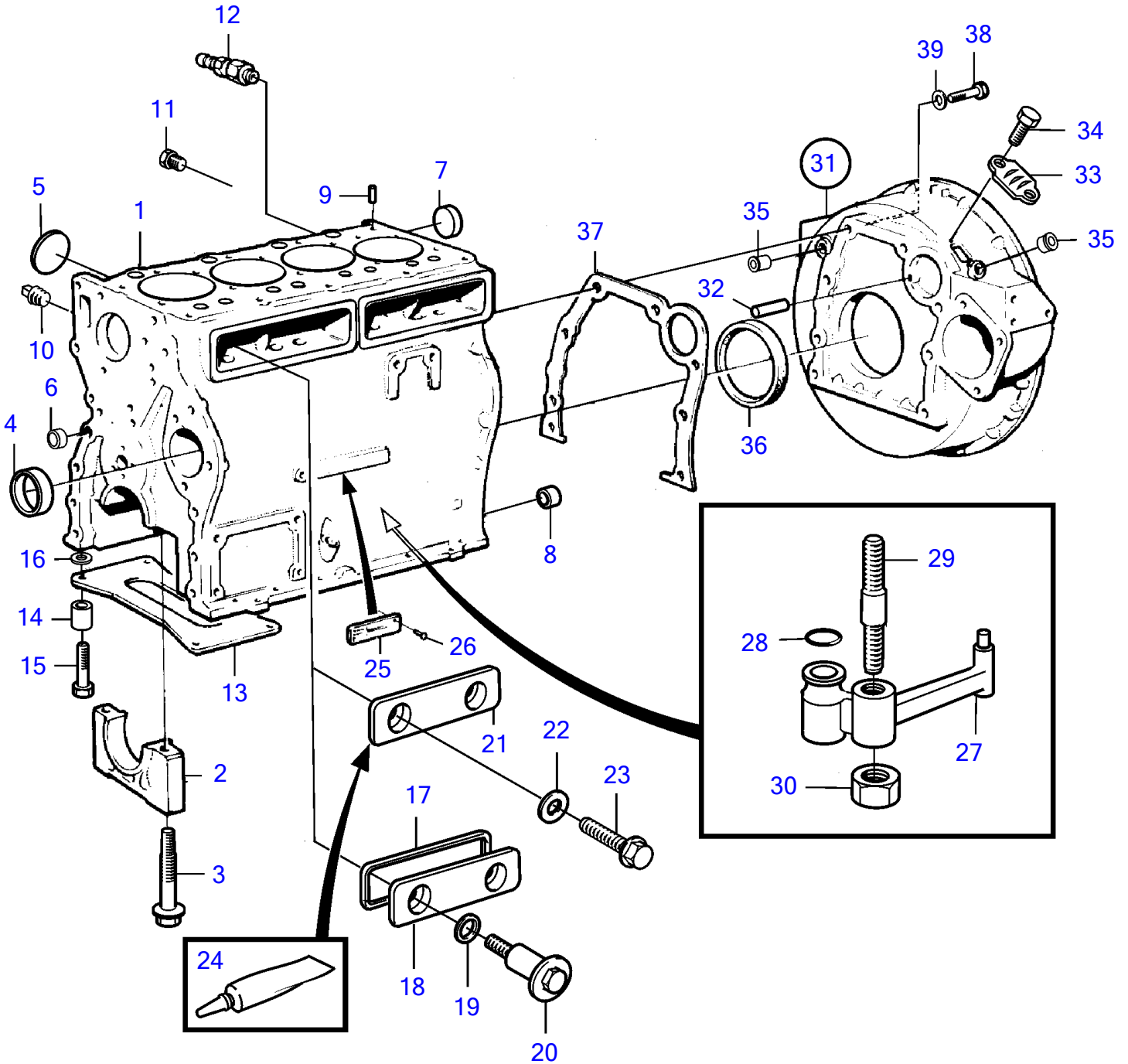


AD31L-A, TAMD31L-A, TAMD31M-A, TAMD31S-A, TMD31L-A



22694

AD31L-A, TAMD31L-A, TAMD31M-A, TAMD31S-A, TMD31L-A

| REF | PART NO. | QTY | DESCRIPTION        | NOTES                                   |
|-----|----------|-----|--------------------|---|
| 1   | 861015   | 1   | Cylinder block     | SN-2203133630                           |
|     | 3583851  | 1   | Cylinder block     | SN2203133631-2203135150                 |
| 2   |          | 5   | • Main bearing cap |   |
| 3   | 861005   | 10  | • Screw            |   |
| 4   | 1542067  | 5   | • Camshaft bushing |   |
| 5   | 463905   | 2   | • Expansion plug   |   |
| 6   | 955083   | 4   | • Cap plug         |   |
| 7   | 968955   | 1   | • Expansion plug   |   |
| 8   | 415311   | 3   | • Guide sleeve     |   |
| 9   | 946402   | 2   | • Grooved pin      |   |
| 10  | 479977   | 1   | Plug               |   |
| 11  | 479979   | 2   | Plug               |   |
| 12  | 947893   | 1   | Shut-off cock      |   |
| 13  | 1545159  | 1   | Foot plate         |   |
| 14  | 1545160  | 4   | Spacer sleeve      |   |
| 15  | 965187   | 4   | Flange screw       |   |
| 16  | 3850090  | 4   | Spacer             |   |
| 17  | 1542052  | 2   | Sealing            | Early type                              |
| 18  | 1542050  | 2   | Inspection lid     | Early type                              |
| 19  | 469846   | 4   | Sealing ring       | Early type                              |
| 20  | 859447   | 4   | Shoulder screw     | Early type                              |
| 21  | 877262   | 2   | Inspection lid     | Late type                               |
| 22  | 18666    | 4   | Gasket             | Late type                               |
| 23  | 965185   | 4   | Flange screw       | Late type                               |
| 24  | 1161277  | X   | Sealant            | Late type                               |
|     | 1161231  | X   | Sealant            | Late type                               |
| 25  |          | 1   | Sign               |   |
| 26  | 950885   | 2   | Drive screw        |   |
| 27  | 1542320  | 4   | Oil jet            | Included in cylinder liner kit 3581714. |
| 28  | 955981   | 4   | O-ring             |   |
| 29  | 1542380  | 4   | Stud               |   |
| 30  | 946035   | 4   | Lock nut           |   |
| 31  | 3581825  | 1   | Flywheel housing   |   |
| 32  | 404069   | 1   | Pin                |   |
| 33  | 407092   | 1   | Cover              |   |
| 34  | 967949   | 2   | Flange screw       |   |
| 35  | 860926   | 1   | Plug               |   |
| 36  | 3582851  | 1   | Sealing ring       |   |
| 37  | 829487   | 1   | Gasket             |   |
| 38  | 965185   | 6   | Flange screw       | L=40mm                                  |
|     | 965220   | 2   | Flange screw       | L=45mm                                  |
| 39  | 941908   | 8   | Spring washer      |   |

7742700-21-1666

22694

Upd:2011-09-28