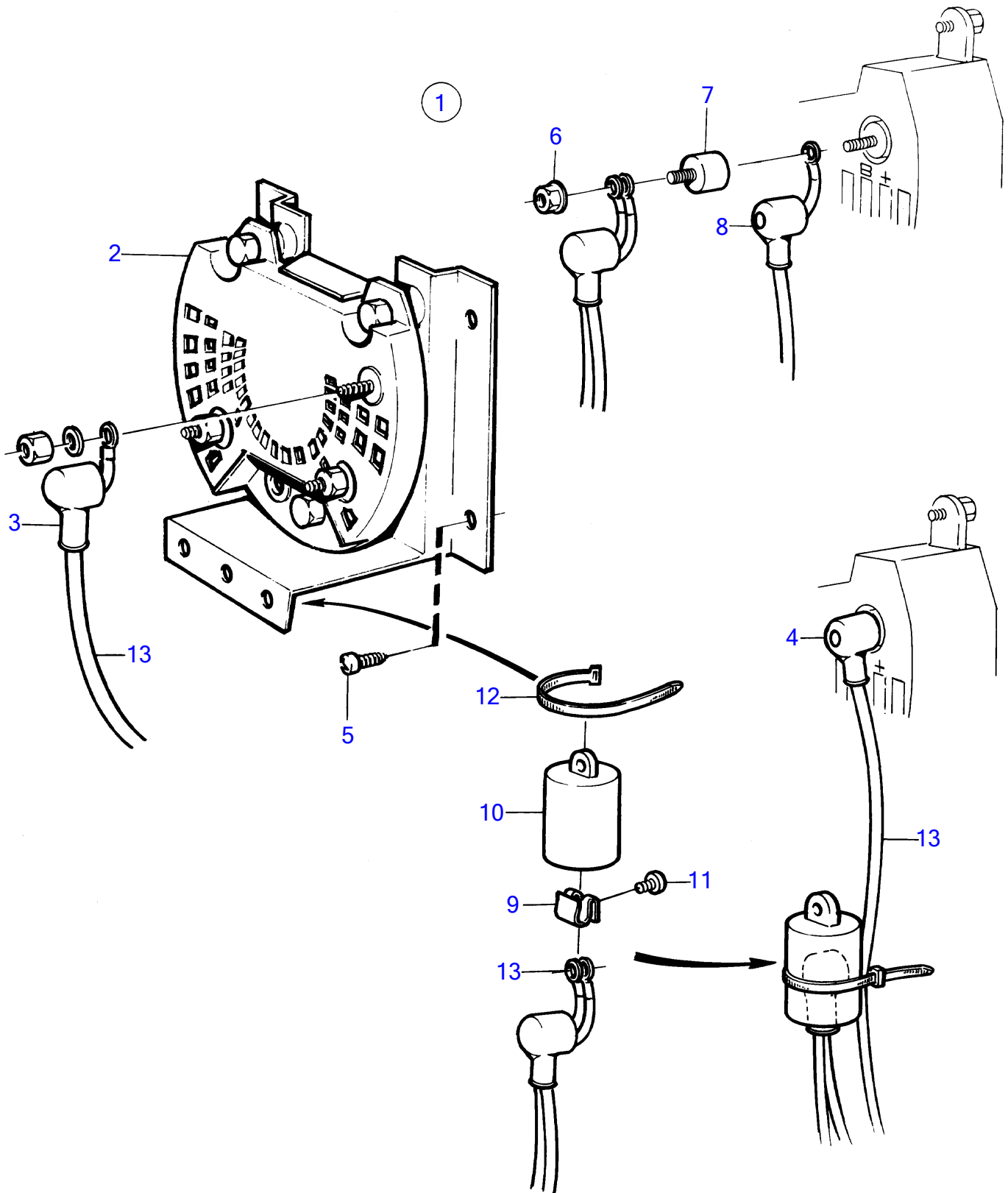


AD31L-A, AD31P-A, AD41L-A, AD41P-A, D41L-A, TAMD31L-A, TAMD31M-A, TAMD31P-A, TAMD31S-A, TAMD41H-A, TAMD41H-B, TAMD41P-A, TAMD41L-A, TAMD41M-A, TMD31L-A, TMD41L-A



AD31L-A, AD31P-A, AD41L-A, AD41P-A, D41L-A, TAMD31L-A, TAMD31M-A, TAMD31P-A, TAMD31S-A, TAMD41H-A, TAMD41H-B, TAMD41P-A, TAMD41L-A, TAMD41M-A, TMD31L-A, TMD41L-A

REF	PART NO.	QTY	DESCRIPTION	SEE SEC.	NOTES
1	859499	1	Junction block		For charging of 2 batteries., For alternator 12V 50A., Replaced by 873120
2	(858842)	1	• Junction block		Obsolete part
3	842150	3	• Protective cap		
4	842150	1	• Protective cap		
9	859492	1	• Spring nut		
10	859493	1	• Protecting casing		
11	955126	1	• Cross recessed screw		
12	948211	1	• Cable tie		
13		X	• electrical materials	1963	