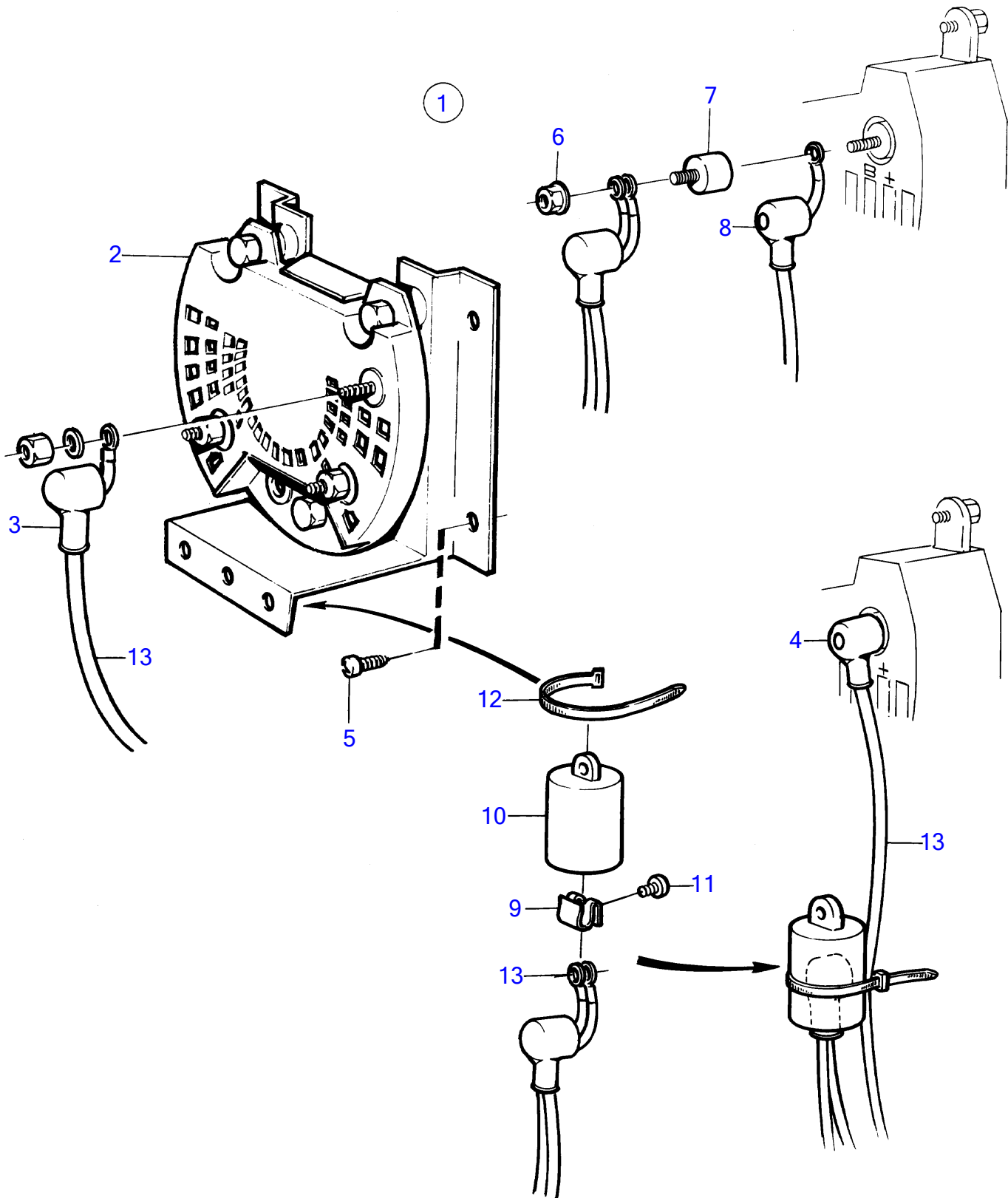


AD31L-A, AD31P-A, AD41L-A, AD41P-A, D41L-A, TAMD31L-A, TAMD31M-A, TAMD31P-A, TAMD31S-A, TAMD41H-A, TAMD41H-B, TAMD41P-A, TAMD41L-A, TAMD41M-A, TMD31L-A, TMD41L-A



AD31L-A, AD31P-A, AD41L-A, AD41P-A, D41L-A, TAMD31L-A, TAMD31M-A, TAMD31P-A, TAMD31S-A, TAMD41H-A, TAMD41H-B, TAMD41P-A, TAMD41L-A, TAMD41M-A, TMD31L-A, TMD41L-A

REF	PART NO.	QTY	DESCRIPTION	SEE SEC.	NOTES
1	858841	1	Junction block		For charging of 2 batteries., For alternator 12V 50A., Repl by 859499
2	(858842)	1	• Junction block		Obsolete part
3	842150	3	• Protective cap		
5	828647	4	• Screw		Not included in later version of kit 858841.
6	945407	2	• Flange nut		Not included in later version of kit 858841.
7	862330	1	• Rubber cushion		
8	(862345)	1	• Protective cap		Obsolete part
12	948211	1	• Cable tie		
13		X	• electrical materials	1963	