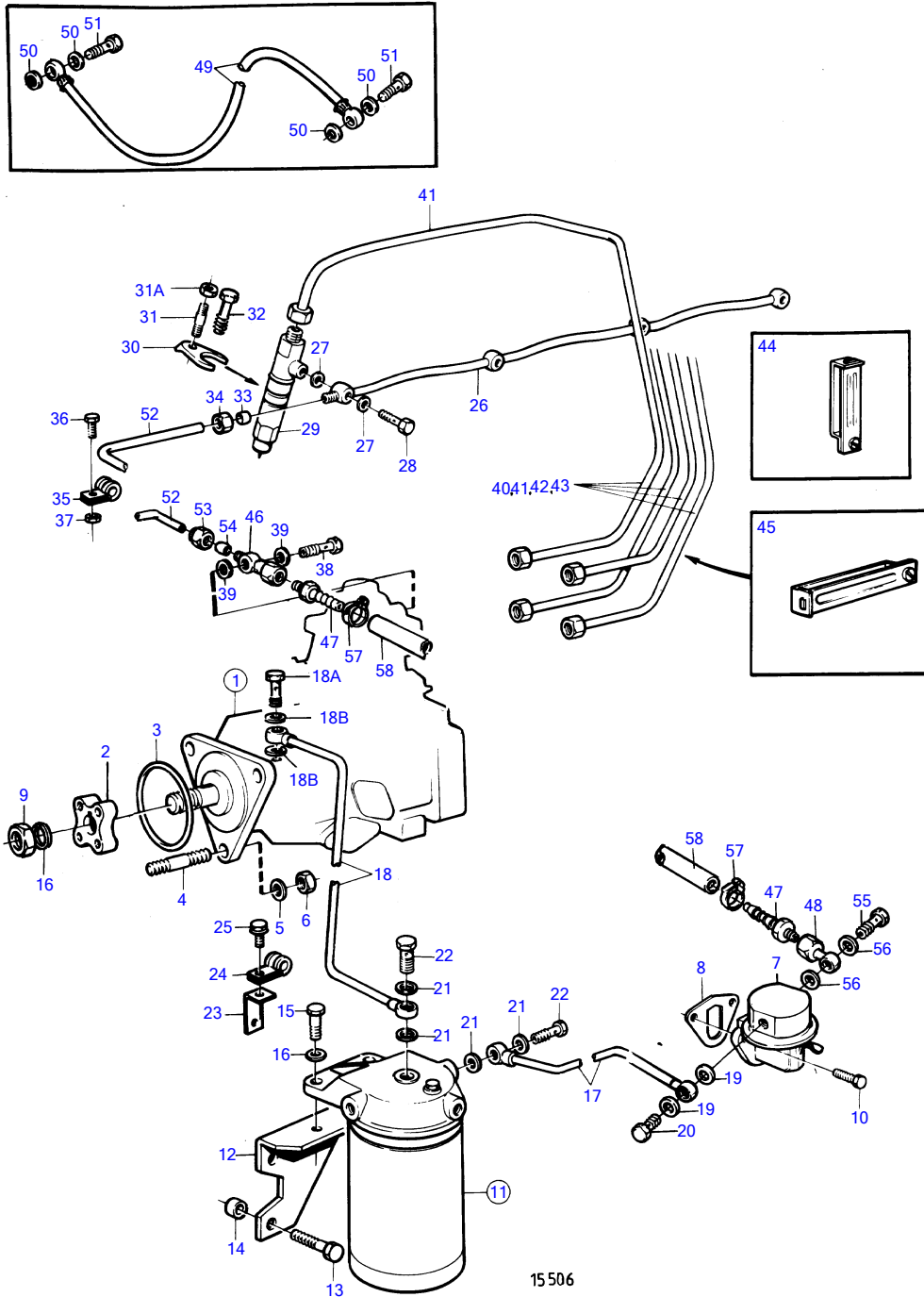


TMD31D



TMD31D

| REF | PART NO. | QTY | DESCRIPTION | SEE SEC. | NOTES |
|-----|----------|-----|-----------------------------|----------|----------------------------------|
| 1 | 860513 | 1 | Injection pump | | |
| | | | . | | |
| | | | . | 926 | |
| | | | . | | |
| | | | . | 932 | |
| | | | . | | |
| | | | . | 929 | |
| | | | . | | |
| | | | . | 930 | |
| | | | . | | |
| | | | . | 932 | |
| | | | . parts not sold separately | | |
| 2 | 859601 | 1 | Hub | | |
| 3 | 968971 | 1 | O-ring | | |
| 4 | 953047 | 3 | Stud | | |
| 5 | 191172 | 3 | Washer | | |
| 6 | 968862 | 3 | Nut | | |
| 7 | 860320 | 1 | Fuel pump | | |
| 8 | 3501530 | 1 | Gasket | | |
| 9 | | 1 | Nut | | Included in fuel injection pump. |
| 10 | 946173 | 2 | Flange screw | | |
| 11 | 840531 | 1 | Fuel filter | | |
| | | | . | | |
| | | | . | 923 | |
| 12 | 838583 | 1 | Bracket | | |
| 13 | 965193 | 2 | Flange screw | | |
| 14 | 843122 | 2 | Spacer sleeve | | |
| 15 | 973083 | 2 | Flange screw | | |
| 16 | | 1 | Washer | | Included in fuel injection pump. |
| 17 | 860447 | 1 | Fuel pipe | | |
| 18 | 838722 | 1 | Fuel pipe | | |
| 18A | 969299 | 1 | Hollow screw | | |
| 18B | 11994 | 2 | Gasket | | |
| 19 | 11994 | 2 | Gasket | | |
| 20 | 969299 | 1 | Hollow screw | | |
| 21 | 969011 | 4 | Gasket | | |
| 22 | 25167 | 2 | Hollow screw | | |
| 23 | 846780 | 1 | Bracket | | |
| 24 | 952624 | 1 | Clamp | | |
| 25 | 946544 | 1 | Flange screw | | |
| 26 | 838666 | 1 | Leak-off line | | |
| 27 | 947620 | 8 | Gasket | | |
| 28 | 74033 | 4 | Hollow screw | | |
| 29 | 859494 | 4 | Injector | | |
| | 3803235 | 4 | Injector, exch | | |
| | | | . | | |
| | | | . | 925 | |
| 30 | 840402 | 4 | Yoke | | |
| 31 | 924068 | 4 | Stud | | Early type |
| 31A | 968862 | 4 | Nut | | Early type |
| 32 | 946470 | 4 | Flange screw | | Late type |
| 33 | 956966 | 1 | Ferrule | | |
| 34 | 956980 | 1 | Fitting nut | | |
| 35 | 121563 | 1 | Clamp | | |
| 36 | 946544 | 1 | Flange screw | | |
| 37 | 945407 | 1 | Flange nut | | |
| 38 | | 1 | Hollow screw | | Included in fuel injection pump. |
| 39 | 11994 | 2 | Gasket | | |
| 40 | 838873 | 1 | Delivery pipe | | Cyl no 1 |
| 41 | 838874 | 1 | Delivery pipe | | Cyl no 2 |
| 42 | 838875 | 1 | Delivery pipe | | Cyl no 3 |
| 43 | 838876 | 1 | Delivery pipe | | Cyl no 4 |
| 44 | 470181 | 2 | Clamp | | 2-pipe |

TMD31D

| REF | PART NO. | QTY | DESCRIPTION | SEE SEC. | NOTES |
|-----|----------|-----|---------------|----------|--------|
| 45 | 470183 | 2 | Clamp | | 4-pipe |
| 46 | 861080 | 1 | Banjo nipple | | |
| 47 | 834781 | 2 | Nipple | | |
| 48 | 861079 | 1 | Banjo nipple | | |
| 49 | 860131 | 1 | Air vent hose | | |
| 50 | 957171 | 4 | Gasket | | |
| 51 | 74033 | 2 | Hollow screw | | |
| 52 | 860021 | 1 | Return line | | |
| 53 | 956980 | 1 | Fitting nut | | |
| 54 | 956966 | 1 | Ferrule | | |
| 55 | 969299 | 1 | Hollow screw | | |
| 56 | 11994 | 2 | Gasket | | |
| 57 | | 2 | Hose clamp | | |
| 58 | | X | Hose | | |