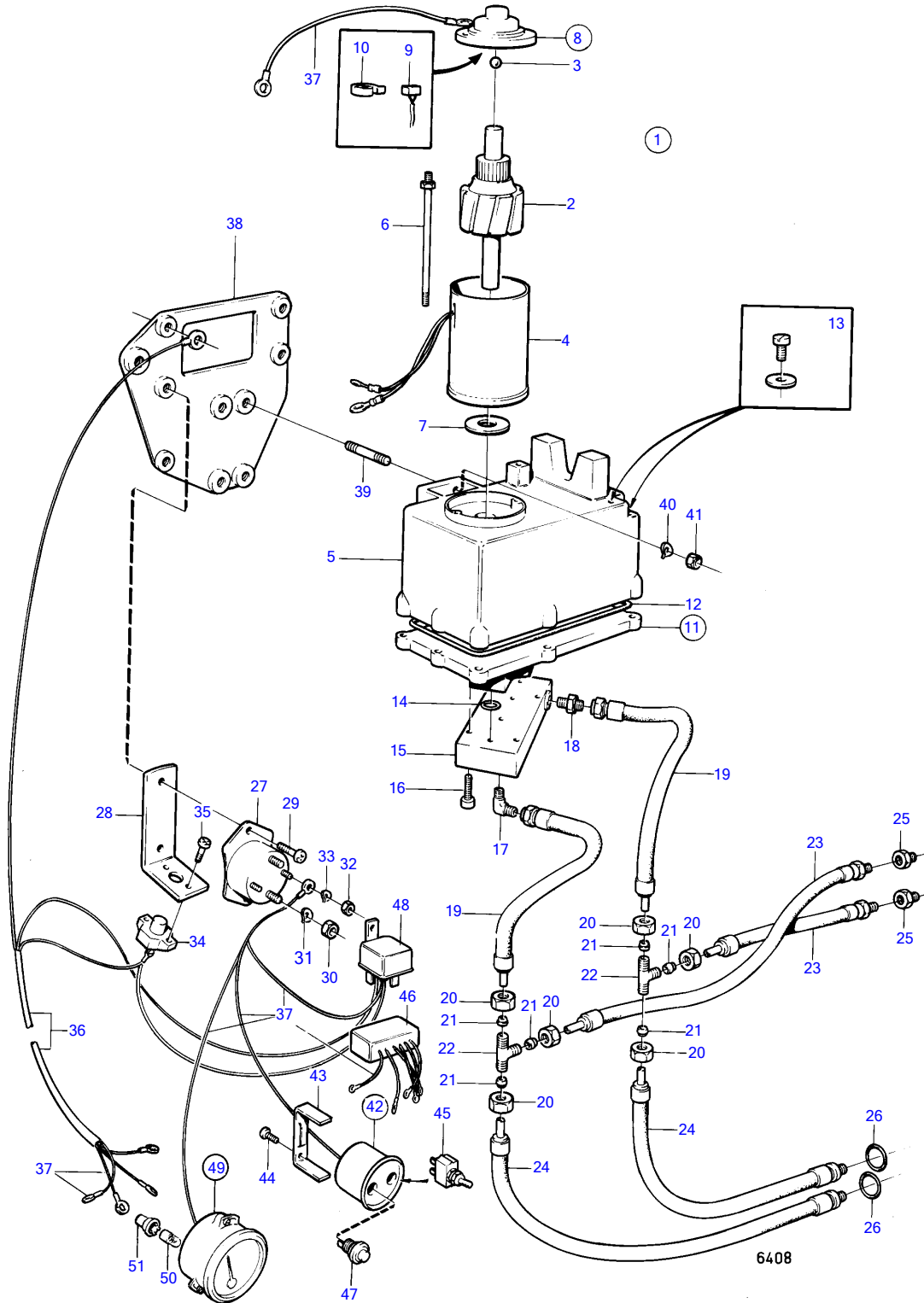


AD30A, AQAD30A, MD30A, TAMD30A, TMD30A



AD30A, AQAD30A, MD30A, TAMD30A, TMD30A

REF	PART NO.	QTY	DESCRIPTION	NOTES
1	850922	1	Hydraulic pump	REPLACED BY HYDRAULIC PUMP 852500 + BRACKET 852568 + 4EA SCREW 950161 + 4EA NUT 955826.
2	851086	1	• Rotor	OBSOLETE PART
3	851087	1	• Ball	OBSOLETE PART
4	851088	1	• Housing	OBSOLETE PART
5	851089	1	• Oil reservoir	OBSOLETE PART
6	851091	1	• Screw kit	OBSOLETE PART
7	851092	X	• Thrust washer kit	OBSOLETE PART
8	851083	1	• Housing	OBSOLETE PART
9	851084	1	• • Carbon brush set	OBSOLETE PART
10	851090	1	• • Spring kit	OBSOLETE PART
11	851080	1	• Pump unit	REPL BY 852563, OBSOLETE PART
	852563	1	• Pump unit	OBSOLETE PART
12	851085	1	• • Sealing ring	INCLUDED IN PUMP-851080., OBSOLETE PART
13	851079	1	• Screw kit	OBSOLETE PART
14	851081	1	• O-ring	OBSOLETE PART
15	851082	1	• Valve housing	REPLACED BY 1 EAS PUMP-852500, 1 EAS BRACKET-852568, 4EA SCREW-950161 AND 4EA NUT-955826.
16	955641	4	• Screw	OBSOLETE PART
17	850916	1	Elbow nipple	
18	850903	1	Tube fitting	
19	850910	2	Hose	OBSOLETE PART
20	941521	6	Fitting nut	
21	956967	6	Ferrule	
22	964034	2	T-nipple	
23	850909	2	Hose	
24	850908	2	Hose	
25	851042	2	Nipple	*
26	941820	2	O-ring	*
27	852565	2	Relay	(850923)
28	850905	1	Bracket	REPLACED BY BRACKET 852568 + 4EA SCREW 950161 + 4EA NUT 955826., OBSOLETE PART
29	950046	3	Cross recessed screw	
30	955834	4	Hexagon nut	
31	941907	4	Spring washer	
32	955844	4	Hexagon nut	
33	941905	4	Spring washer	
34	841178	1	Automatic fuse	
35	950013	2	Cross recessed screw	
36	850836	1	Cable	REPLACED BY CABLE 852191 + CABLE 852192.
37		X	CABLES AND TERMINALS	SEE GROUP 3
38	850803	1	Bracket	REPLACED BY BRACKET 852568 + 4EA SCREW 950161 + 4EA NUT 955826.
39	941872	4	Stud	
40	941906	4	Spring washer	
41	955825	4	Hexagon nut	
42	850989	1	Instrument panel	USA, OBSOLETE PART
	851871	1	Instrument panel	(851501) EXCL USA, OBSOLETE PART
43	850372	1	• Attaching brace	
44	944201	2	• Cross recessed screw	
45	814322	1	• Toggle switch	
46	851870	1	• Trimming limiter	(851771), OBSOLETE PART
47	852026	1	• Switch	
48	876040	1	• Relay kit	
49	851502	1	• Trim indicator	INCLUDED ONLY IN 851501., EXCL USA
50	192451	1	• • Bulb	OBSOLETE PART
51	841954	1	• • Lamp socket	