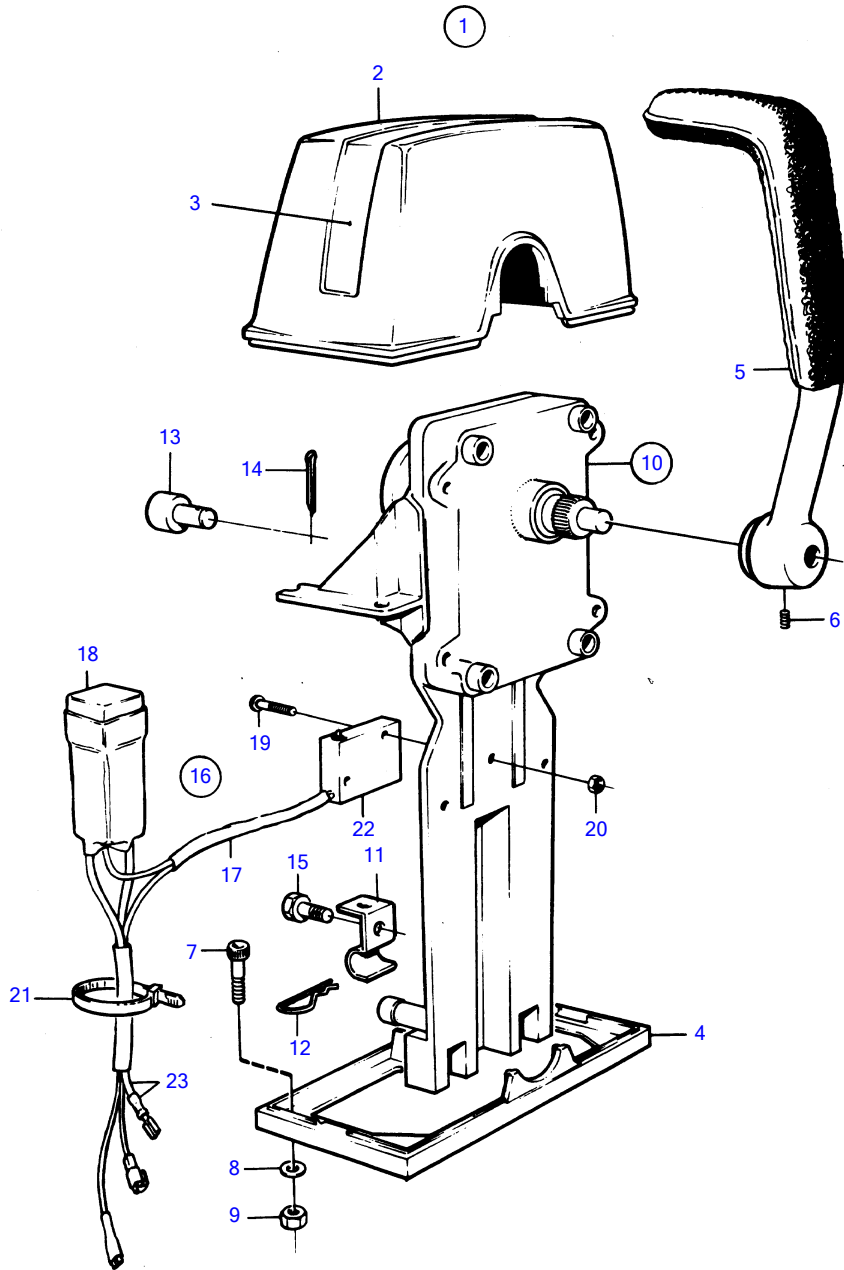


AD30A, AQAD30A, MD30A, TAMD30A, TMD30A



7469

AD30A, AQAD30A, MD30A, TAMD30A, TMD30A

| REF | PART NO. | QTY | DESCRIPTION            | NOTES         |
|-----|----------|-----|------------------------|---------------|
| 1   | 851602   | 1   | Mounting kit           | SINGLE        |
| 2   | 839472   | 1   | • Cover                |               |
| 3   |          | 1   | • Decal                |               |
| 4   | 839474   | 1   | • Plate                |               |
| 5   | 839475   | 1   | • Hand lever           |               |
| 6   | 839693   | 1   | • Lock screw           |               |
| 7   | 947671   | 4   | • Hex. socket screw    |               |
| 8   | 960138   | 4   | • Washer               |               |
| 9   | 955780   | 4   | • Hexagon nut          |               |
| 10  | 851600   | 1   | Control                |               |
| 11  | 853423   | 1   | • Retainer             |               |
| 12  | 852924   | 1   | • Clip                 |               |
| 13  | 839638   | 1   | • Cube                 |               |
| 14  | 17253    | 1   | • Split pin            |               |
| 15  | 839664   | 1   | Screw                  |               |
| 16  | 839641   | 1   | Neutral position con   |               |
| 17  | 839619   | 1   | • Cable kit            | OBSOLETE PART |
| 18  | 1501832  | 1   | • Relay                |               |
| 19  | 946177   | 2   | • Cross recessed screw |               |
| 20  | 947536   | 2   | • Hexagon nut          |               |
| 21  | 948210   | X   | • Cable tie            |               |
| 22  | 850200   | 1   | • Toggle switch        |               |
| 23  |          | X   | CABLES AND TERMINALS   | SEE GROUP 3   |