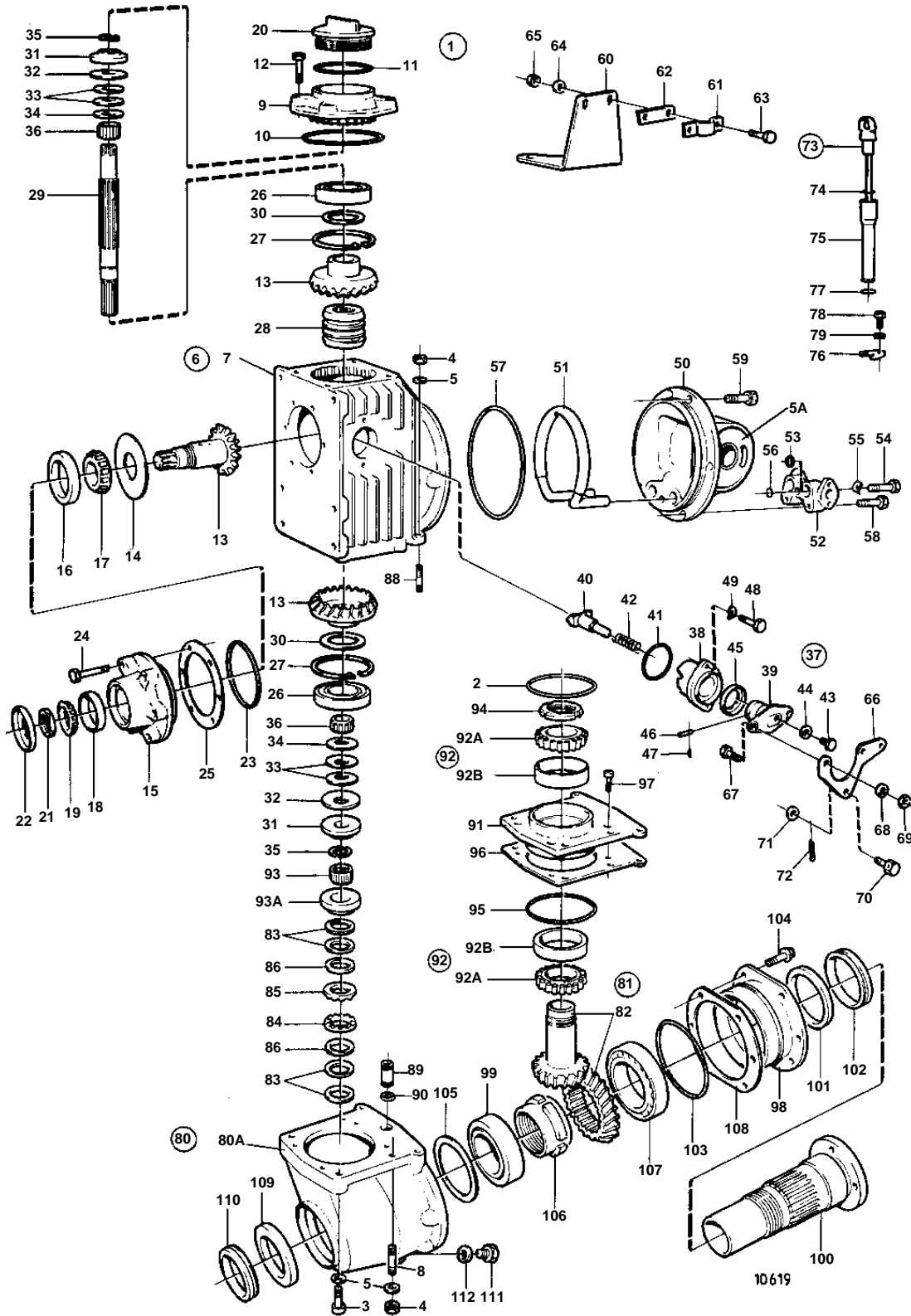


2001,2001B,2002,2002B,2003,2003B,2003T,2003TB



2001,2001B,2002,2002B,2003,2003B,2003T,2003TB

REF	PART NO.	QTY	DESCRIPTION	SEE SEC.	NOTES
1		1	V-DRIVE UNIT MS2V		RATIO 2,4:1
2	925256	1	• O-ring		
3	963702	2	• Screw		
4	963106	4	• Nut		
5	955894	4	• Washer		
5A	838507	1	• Rubber element		
6	852582	1	• Upper gear unit		
7	852729	1	• • Housing		
8	924066	2	• • Stud		
9	852524	1	• • Cover		
10	949962	1	• • O-ring	IK	
11	1664473	1	• • O-ring	IK	
12	946671	4	• • Flange screw		
13	851616	1	• • Gear set		
14	851621	1	• • Guide disc		
15	851619	1	• • Bearing box		
16	181302	1	• • Cup		
17	181301	1	• • Cone		
18	183750	1	• • Cup		
19	183752	1	• • Cone		
20	851754	1	• • Oil filler cap		
21	852485	1	• • Lock nut		
22	851755	1	• • Sealing ring	IK	
23	925093	1	• • O-ring	IK	
24	940101	6	• • Screw		
25	851622	X	• • Adjusting washer		TH = 0,10 MM
	851623	X	• • Adjusting washer		TH = 0,15 MM
	851624	X	• • Adjusting washer		TH = 0,35 MM
26	851756	2	• • Bearing		
27	852190	2	• • Lock ring		
28	851626	1	• • Sliding sleeve		
29	852527	1	• • Shaft		
30	852184	X	• • Shim		TH = 0,05 MM
	84219	X	• • Adjusting washer		TH = 0,10 MM
	949776	X	• • Adjusting washer		TH = 0,15 MM
	84218	X	• • Spacer		TH = 0,35 MM
31	852079	2	• • Lock washer		
32	852213	2	• • Disc spring		
33	852080	6	• • Disc spring		
34	852311	2	• • Washer		TH = 0,4 MM
	852317	2	• • Washer		TH = 0,8 MM
35	851629	4	• • Lock ring half		
36	851757	2	• • Needle bearing		
37	851661	1	• • Shift mechanism		
38	851662	1	• • • Bearing housing		
39	897816	1	• • • Eccentric piston		
			• • • Bulletin P-44-1-7	P-44-1-7-EN	Shift mechanism, eccentric piston
40	851664	1	• • • Dog		
41	925065	1	• • • O-ring	IK	
42	814184	1	• • • Spring		
43	897711	1	• • • Screw		
44	897871	X	• • • Adjusting washer		TH = 0,20 MM
45	958838	1	• • • Sealing ring	IK	
46	942871	1	• • • Pin		
47	951924	1	• • • Tensioning din		
48	955296	2	• • Screw		
49	941907	2	• • Spring washer		
50	851872	1	• • Bracket		
51	852159	1	• • Oil cooler		
52	852733	1	• • Pipe connection		
53	943309	2	• • O-ring	IK	
54	959211	1	• • Screw		

2001,2001B,2002,2002B,2003,2003B,2003T,2003TB

REF	PART NO.	QTY	DESCRIPTION	SEE SEC.	NOTES
55	941906	1	• • Spring washer		
56	949750	1	• • O-ring	IK	
57	925262	1	• • O-ring	IK	
58	945444	4	• • Flange screw		L = 25 MM
59	965179	2	• • Flange screw		L = 50 MM
60	851441	1	• • Bracket		
61	819067	1	• • Brace		
62	819068	1	• • Washer		
63	955246	2	• • Screw		
64	940090	2	• • Washer		
65	946577	2	• • Lock nut		
66	852363	1	• • Lever		
67	955270	2	• • Screw		
68	955948	2	• • Lock washer		
69	955781	2	• • Nut		
70	804312	1	• • Cube		
71	955892	1	• • Washer		
72	17276	1	• • Cotter pin		
73	852915	1	• • Oil dipstick		
74	925054	1	• • • O-ring	IK	
75	852916	1	• • Tube		
76	852229	1	• • Cap		
77	925055	1	• • O-ring	IK	
78	956063	1	• • Screw		
79	955891	1	• • Washer		
80	852598	1	• Gear under		
80A	852739	1	• • Housing		
81	851448	1	• • Gear set		
82		2	• • • GEAR		
83		4	• • • CUP SPRING		
84		18	• • • OUTER DISC		
85		17	• • • INNER DISC		
86		2	• • • THRUST WASHER		
87		1	• • • ADJUSTING SCREW		
88	953053	2	• • Stud		
89	851415	1	• • Guide sleeve		
90	925056	2	• • Rubber ring	IK	
91	852589	1	• • Bearing box		
92	183842	2	• • Roller bearing		
92A		1	• • • BEARING		
92B		1	• • • BEARING HOLDER		
93	192100	1	• • Needle bearing		
93A	852967	1	• • Bearing carrier		
94	852616	1	• • Lock nut		
95	925256	1	• • O-ring	IK	
96	852593	X	• • Adjusting washer		TH = 0,10 MM
	852594	X	• • Adjusting washer		TH = 0,15 MM
	852595	X	• • Adjusting washer		TH = 0,35 MM
97	959202	4	• • Screw		L = 14 MM
98	852584	1	• • Bearing housing		
99	184619	1	• • Roller bearing		
100	852599	1	• • Tubular shaft		
101	959039	1	• • Sealing ring	IK	
102	944144	1	• • Sealing ring	IK	
103	925263	1	• • O-ring	IK	
104	945444	6	• • Flange screw		
105	943252	X	• • Adjusting washer		TH = 0,05 MM
	943866	X	• • Adjusting washer		TH = 0,10 MM
	943867	X	• • Adjusting washer		TH = 0,20 MM
	967557	X	• • Adjusting washer		TH = 0,30 MM
	943868	X	• • Adjusting washer		TH = 0,40 MM

7726000 - 04B - 04B-0275

10619

Upd: 22 NOV 2005

2001, 2002, 2003, 2003T

VOLVO
PENTA

