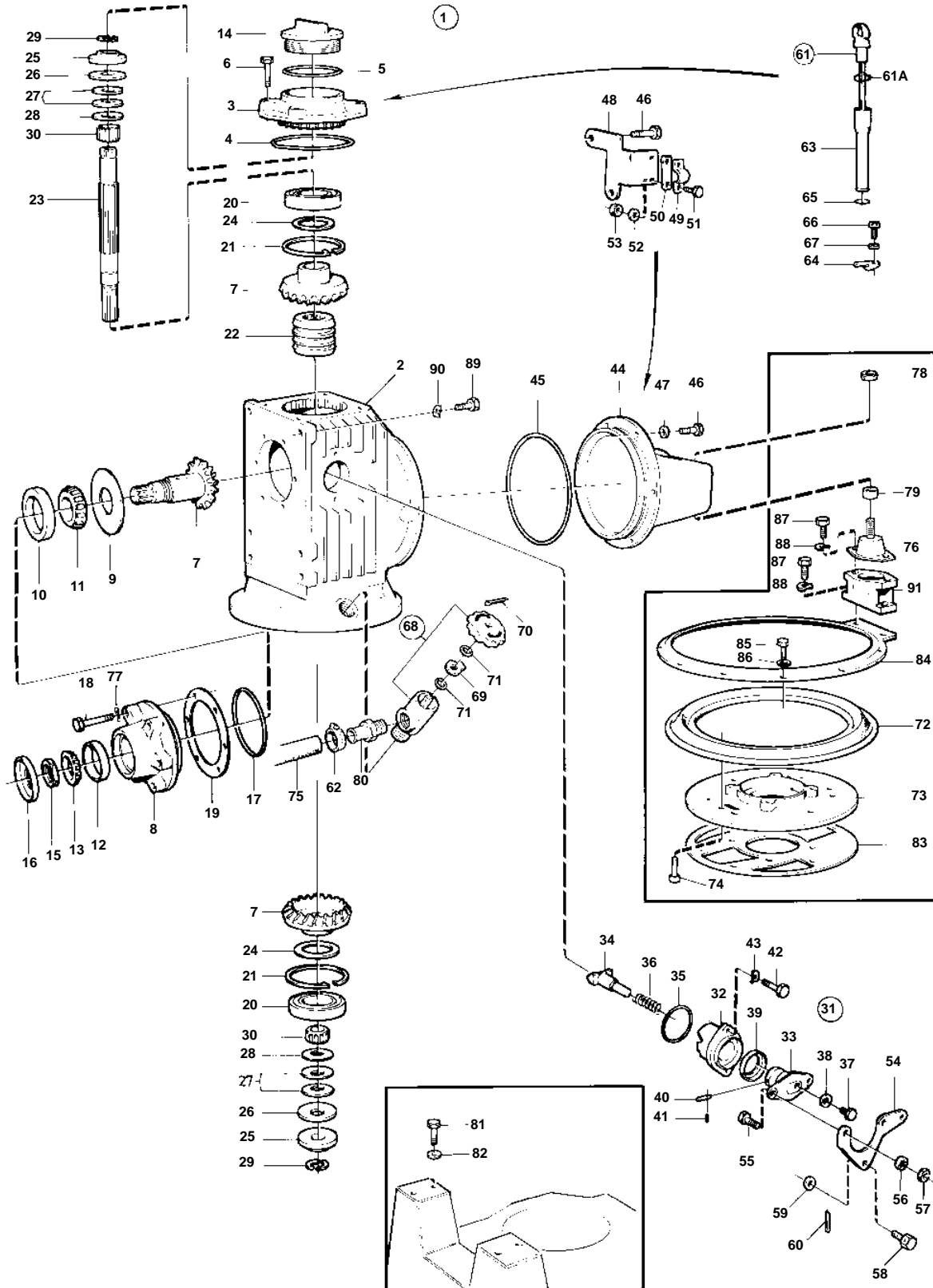


2003T,2003TB



11050

2003T,2003TB

REF	PART NO.	QTY	DESCRIPTION	SEE SEC.	NOTES
1	853754	1	Upper gear unit		REPL BY 872807
2	852717	1	• Housing		
3	852524	1	• Cover		
4	949962	1	• O-ring	IK	
5	1664473	1	• O-ring	IK	(925254)
6	946671	4	• Flange screw		
7	851616	1	• Gear set		
8	851619	1	• Bearing box		REPL BY 872710. BEARING UNIT 851619 SHOULD NOT BE USED TOGETHER WITH VIBRATION DAMPER 872809.SEE GROUP 2A.
9	851621	1	• Guide disc		
10	181302	1	• Cup		
11	181301	1	• Cone		
12	183750	1	• Cup		
13	183752	1	• Cone		
14	851754	1	• Oil filler cap		
15	852485	1	• Lock nut		
16	851755	1	• Sealing ring	IK	
17	925093	1	• O-ring	IK	
18	940101	6	• Screw		
19	851622	X	• Adjusting washer		TH = 0,10 MM
	851623	X	• Adjusting washer		TH = 0,15 MM
	851624	X	• Adjusting washer		TH = 0,35 MM
20	851756	2	• Bearing		
21	852190	2	• Lock ring		
22	851626	1	• Sliding sleeve		
23	852527	1	• Shaft		
24	852184	X	• Shim		TH = 0,05 MM
	84219	X	• Adjusting washer		TH = 0,10 MM
	949776	X	• Adjusting washer		TH = 0,15 MM
	84218	X	• Spacer		TH = 0,35 MM
25	852079	2	• Lock washer		
26	852213	2	• Disc spring		
27	852080	6	• Disc spring		
28	852311	2	• Washer		TH = 0,4 MM
	852317	2	• Washer		TH = 0,8 MM
29	851629	4	• Lock ring half		
30	851757	2	• Needle bearing		
31	851661	1	• Shift mechanism		
32	851662	1	• • Bearing housing		
33	897816	1	• • Eccentric piston		
			• • Bulletin P-44-1-7	P-44-1-7-EN	Shift mechanism, eccentric piston
34	851664	1	• • Dog		
35	925065	1	• • O-ring	IK	
36	814184	1	• • Spring		
37	897711	1	• • Screw		
38	897871	X	• • Adjusting washer		
39	958838	1	• • Sealing ring	IK	
40	942871	1	• • Pin		
41	951924	1	• • Tensioning din		
42	955296	2	• Screw		
43	941907	2	• Spring washer		
44	872475	1	• Bracket		
45	925262	1	• O-ring	IK	
46	945444	6	• Flange screw		
47	955894	2	• Washer		
48	852074	1	• Cable attachment		
49	819067	1	• Brace		
50	819068	1	• Washer		
51	955246	2	• Screw		
52	940090	2	• Washer		

7726000 - 04C - 04C-0760

11050

Upd: 22 NOV 2005

2001, 2002, 2003, 2003T

**VOLVO**  
**PENTA**

2003T,2003TB

REF	PART NO.	QTY	DESCRIPTION	SEE SEC.	NOTES
53	946577	2	• Lock nut		
54	852363	1	• Lever		
55	955270	2	• Screw		
56	955948	2	• Lock washer		
57	955781	2	• Nut		
58	840312	1	• Screw		
59	955892	1	• Washer		
60	17276	1	• Cotter pin		
61	852915	1	• Oil dipstick		
61A	925054	1	• • O-ring	IK	
62	961665	4	• Hose clamp		
63	852916	1	• Tube		
64	852229	1	• Cap		
65	925055	1	• O-ring	IK	
66	956063	1	• Screw		
67	955891	1	• Washer		
68	851777	1	• Tap		
69	851783	1	• • Lock washer		
70	949791	1	• • Cotter pin		
71	955989	2	• • O-ring	IK	
72	850265	1	• Sealing strip		REPL BY 854934
			• Bulletin 48-10	48-10-EN	Sealing Strip
72					SEE GROUP 10A
73	852719	1	• Intermediate section		
74	946541	3	• Screw		
75	952969	X	• Rubber hose		
76	858805	1	• Rubber element		
77	941906	6	• Spring washer		
78	971084	1	• Lock nut		
79	853867	1	• Spacer ring		
80	851779	1	• Nipple		
81	963580	4	Screw		INCLUDED IN COMPLETE DRIVE UNIT
82	960148	4	Washer		INCLUDED IN COMPLETE DRIVE UNIT
83	853892	1	Gasket	IK	(851996). INCLUDED IN COMPLETE DRIVE UNIT
84	852734	1	Clamping ring		INCLUDED IN COMPLETE DRIVE UNIT
85	946730	10	Screw		INCLUDED IN COMPLETE DRIVE UNIT
86	941670	10	Washer		INCLUDED IN COMPLETE DRIVE UNIT
87	963580	4	Screw		INCLUDED IN COMPLETE DRIVE UNIT
88	853095	4	Washer		(942551). INCLUDED IN COMPLETE DRIVE UNIT
89	970950	6	Screw		(955320). INCLUDED IN COMPLETE DRIVE UNIT
90	941908	6	Spring washer		INCLUDED IN COMPLETE DRIVE UNIT
91	853562	1	Bracket		INCLUDED IN COMPLETE DRIVE UNIT