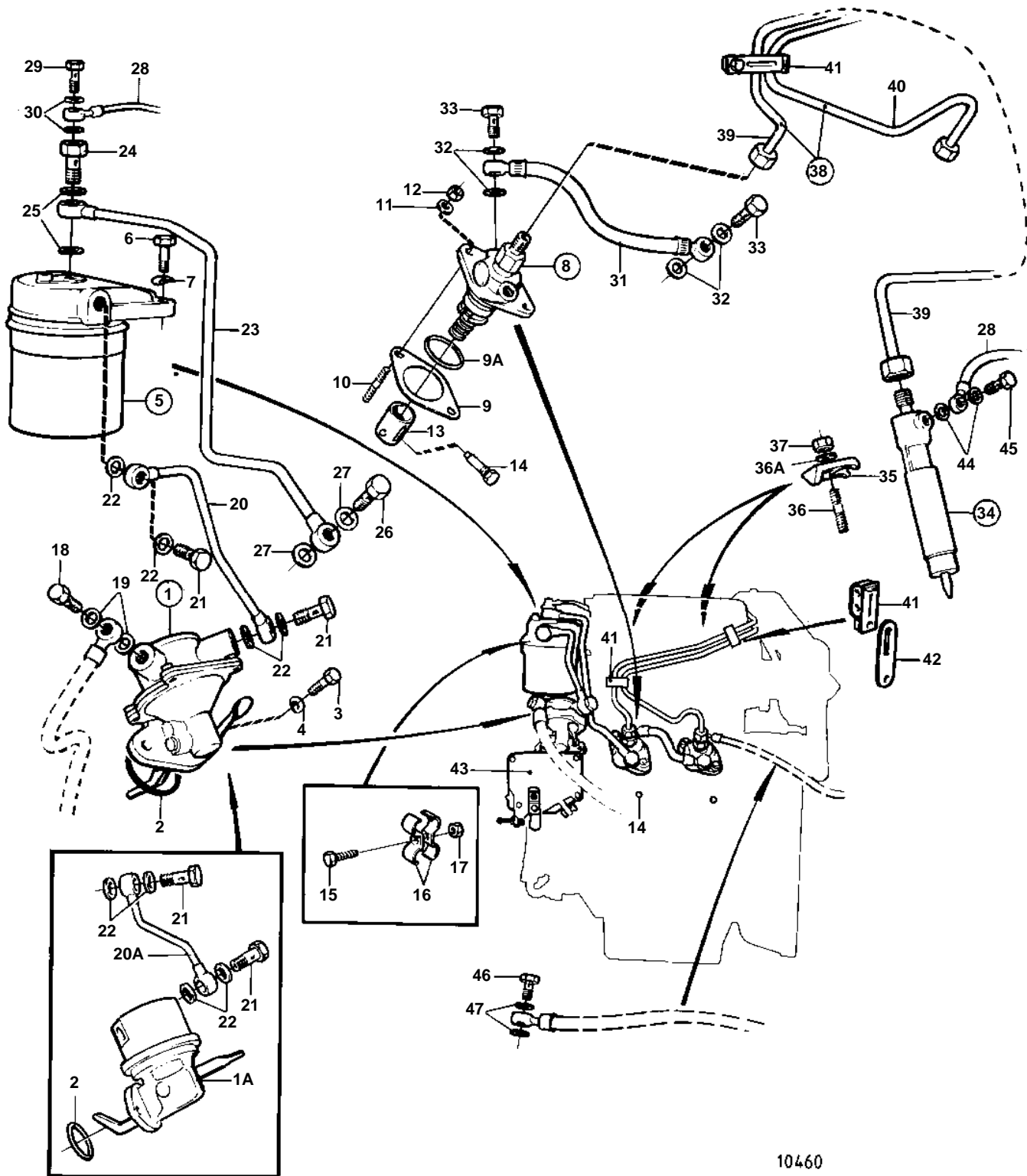


2002AG,2002BG



2002AG,2002BG

REF	PART NO.	QTY	DESCRIPTION	SEE SEC.	NOTES
1	833323	1	Fuel pump		SN-2300046825
				02C-0825	
1A	859428	1	Feed pump		SN2300046826-
2	942353	1	O-ring	IK	
3	942001	2	Screw		
4	941906	2	Spring washer		
5	840532	1	Fuel filter		
				02C-1025	
6	970948	2	Screw		
7	960148	1	Washer		
8	840594	2	Injection pump		
				02C-0625	
9	860211	X	Spacer		TH = 0,2 MM
	838298	X	Spacer		TH = 0,3 MM
	838299	X	Spacer		TH = 0,6 MM
	838300	X	Spacer		TH = 0,9 MM
9A	978961	2	O-ring	IK	
10	924061	4	Stud		
11	955894	4	Washer		
12	955782	4	Nut		
13	840598	2	Tappet		
14	840312	2	Screw		
15	955271	1	Screw		
16	404279	2	Clamp		
17	955781	1	Nut		
18	25167	1	Hollow screw		
19	957178	2	Gasket	IK	
20	840434	1	Fuel pipe		SN-2300046825 FOR 833323
20A	860912	1	Fuel pipe		SN2300046826- FOR 859428
21	25167	2	Hollow screw		
22	957178	4	Gasket	IK	
23	840450	1	Fuel pipe		
24	944679	1	Hollow screw		
25	957178	2	Gasket	IK	
26	969299	1	Hollow screw		(74040)
27	957175	2	Gasket	IK	
28	840483	1	Leak-off line		
29	243487	1	Screw		
30	957170	2	Gasket	IK	
31	840317	1	Fuel hose		
32	957175	4	Gasket	IK	
33	969299	2	Hollow screw		(74040)
34	840595	2	Injector		
	3803232	2	Injector, exch		Exchange unit
				02C-0775	
35	840402	2	Yoke		
36	924066	2	Stud		SEE GROUP 2A
36A	955894	2	Washer		
37	955782	2	Nut		
38		1	PRESSURE PIPE KIT		
39	840897	1	• Delivery pipe		
40	840898	1	• Delivery pipe		
41	470181	2	• Clamp		
42	422323	1	• Bracket		
43		1	REGULATION SYSTEM	02C-1180	

