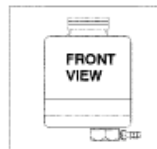
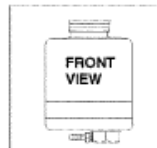


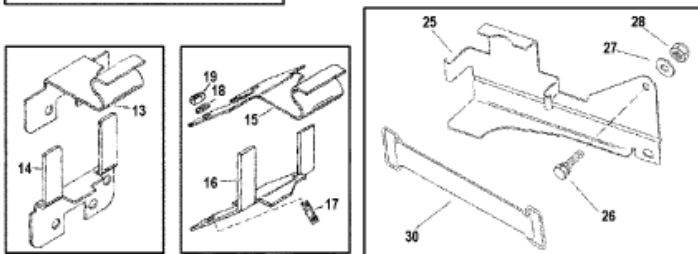
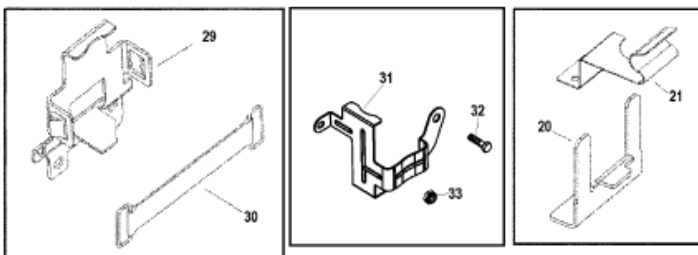
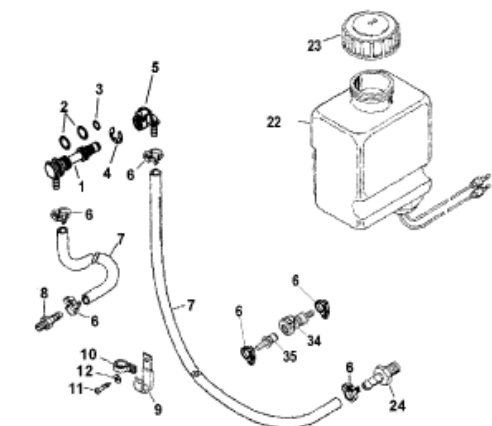
DRAWING #1



DRAWING #2



DRAWING #3



2258

Parts List						
Ref	Class	Part	Description	Qty	Comment	Footnote
1	22	861150A 2	FITTING	1		
2	25	20195 1	O-RING, (.487 x .103)	2		
3	25	62702 1	O-RING, (.301 x .070)	1		
4	53	87843	E RING	1		
5	22	861163	QUICK CONNECTOR, (90 Degree)	1		
6	54	41582 5	CLAMP, Nylon	4		
7	32	19409 71	HOSE, (54.00 Inches Bulk)	2	(Cut to Length) (9.50 Inches) (36.0	
8	22	16739	CONNECTOR	1		
9	54	64235 1	J CLIP	1		
10	54	23567	CLIP	1		
11	10	60605	SCREW, (#10-16 X .750 Inch)	1		
12		69205	C WASHER	1		
13		806293T	BRACKET, Clip (3.0L/3.6L4.2L Die	1	(See Oil Reservoir Components Fo	
14		860065A 1	BRACKET KIT (3.0L/3.6L4.2L Dies	1	(See Oil Reservoir Components Fo	
15		806292T 1	BRACKET	1	(See Oil Reservoir Components Fo	
16		807025T	BRACKET	1	(See Oil Reservoir Components Fo	
17	16	805357	STUD, (.375-16 x 2.130) (4.3LX/5.7	2		
18	12	20553	WASHER, (.406 x .734 x .063)	2		
19	11	32219	NUT, (.375-16)	2		
20		806649T	BRACKET (262 Magnum EFI)	1	(See Oil Reservoir Components Fo	
21		806650T	BRACKET (5.7L/5.7LX/350 Magnu	1	(See Oil Reservoir Components Fo	
22		806193A33	MONITOR ASSEMBLY, Oil	1	(Fitting Pointing Toward Right Side	
22		806193A30	RESERVOIR	1	(Fitting Pointing Toward Left Side)	
22		806193A37	RESERVOIR	1	(Fitting Pointing Toward Front Side	
23	36	806727 1	CAP	1		
24	22	808624	CONNECTOR	1		
25		807839T 1	BRACKET (4.3LX/4.3LXH/262 Ma	1	(See Oil Reservoir Components Fo	
26	10	65746 1	SCREW AND LOCKWASHER, (.2E	1		
27	12	69057	WASHER, (.281 x .734 x .063) (4.3	1		
28	11	826708 8	NUT, (.250-20) (4.3LX/4.3LXH/262	1		
-		806054A 1	OIL RESERVOIR RELOCATION KI	1		
29		860065A 1	BRACKET KIT	1	(See Note) (5.7L/5.7LX/350 Magr	
30		808023T	STRAP, Bracket	1		
31		865175T	BRACKET (4.3L/5.0L/5.7L/350 M	1	(See Component Illustration)	
32	10	828552	SCREW, (.375-16 x .500)	1		
33	11	826709 8	NUT, (.250-20)	1		
34	22	865190	CONNECTOR, Female	1		
35	22	865191	FITTING, Male	1		