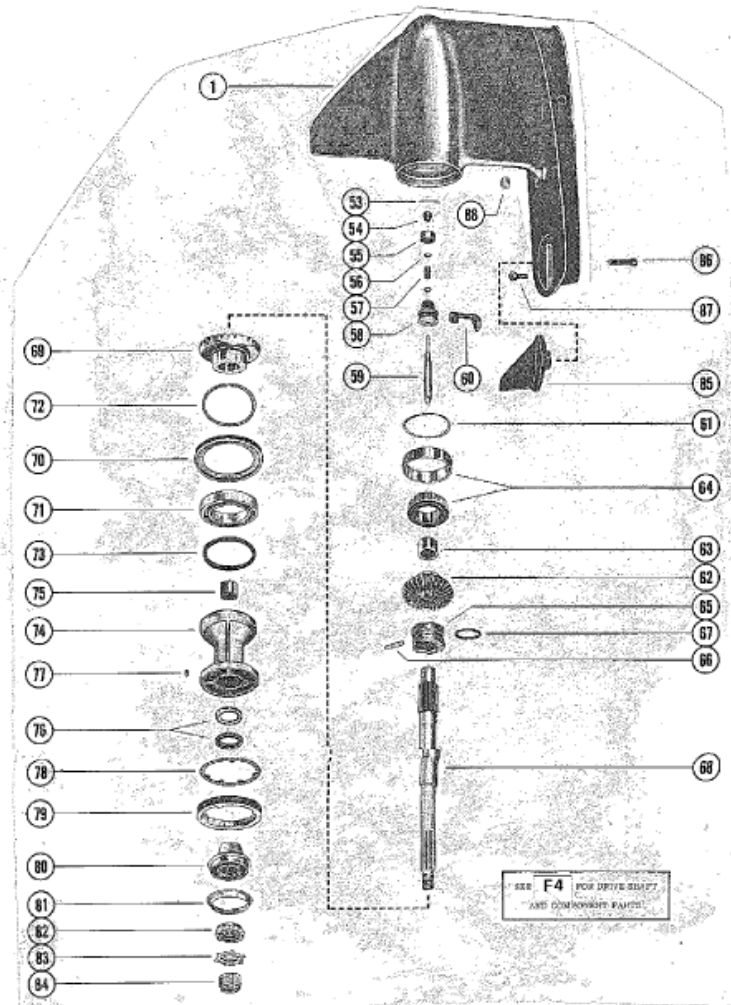


Parts List



Ref	Class	Part	Description	Qty	Comment	Footnote
-	1623	8951A 2	GEAR HOUSING	1		
1	1623	5356A 4	GEAR HOUSING	1		
53	18	89212	COTTER PIN, CLUTCH ACTUAT	1		
54		N.S.S.	SLEEVE, ADJUSTING REPLAC	1		
55		N.S.S.	RETAINER, SPRING REPLAC	1		
56		N.S.S.	WASHER REPLACED BY 19755	2		
57		N.S.S.	SPRINGER REPLACED BY 19755A	1		
58		N.S.S.	SPOOL REPLACED BY 19755A2	1		
59		N.S.S.	SHAFT REPLACED BY 19755A2	1		
60		76865	SHIFT CRANK	1		
61	15	47397A 1	SHIM	AR		
62	43	92158A 1	FORWARD GEAR	1		
63	31	30895	ROLLER BEARING, FORWARD	1		
64	31	35928A 1	TAPERED ROLLER BEARING A	1		
65	52	66063	CLUTCH	1		
66	17	30632	CROSS PIN	1		
67	24	30893	SPRING, RETAINER - CROSS PIN	1		
68	44	66060	PROPELLER SHAFT	1		
69	43	61026	REVERSE GEAR	1		
70		35915	THRUST RING, BEARING CARF	1		
71	30	17927	BALLBEARING, REVERSE GEAR	1		
72	15	31535A 1	SHIM	AR		
73	25	31534	O-RING, BEARING CARRIER	1		
74		73020A14	BEARING CARRIER ASSEMBLY	1		
75	31	30956	ROLLER BEARING	1		
76	26	76868	OIL SEAL	2		
77	28	30281	KEY	1		
78	14	79447	TAB WASHER, GEAR HOUSING	1		
79		79448	COVER, GEAR HOUSING	1		
80		56292A 2	THRUST HUB AND WASHER AS:	1		
81	12	35365	WASHER, CUPPED	1		
82	12	31211A 2	WASHER, SPLINED - PROPELLER	1		
83	14	31210	TAB WASHER, PROPELLER NUT	1		
84	11	52707A 1	PROPELLER NUT	1		
85		31640A 1	TRIM TAB ASSEMBLY	1		
86	10	32470	SCREW, TRIM TAB TO GEAR HO	1		
87	10	30206	SCREW, GEAR HOUSING TO DR	1		
88	11	34933	NUT, DRIVE SHAFT HOUSING TC	2		