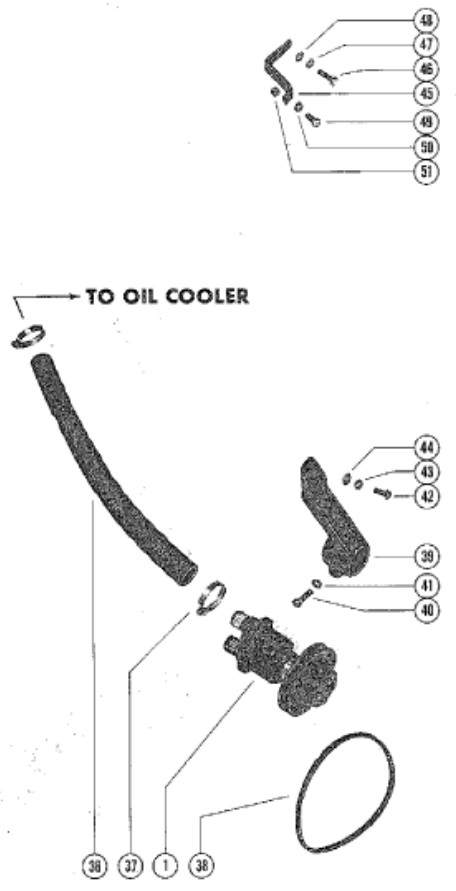
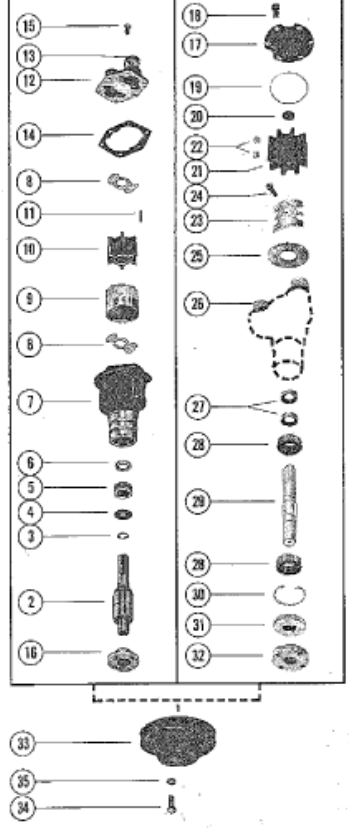


BREAKDOWN OF WATER PUMPS

B-46-47506A4 **B-46-59112A2**



| Parts List | | | | | | |
|------------|-------|----------|-----------------------------|-----|--------------------------|----------|
| Ref | Class | Part | Description | Qty | Comment | Footnote |
| 1 | 46 | 47506A 4 | WATER PUMP ASSEMBLY, COM | 1 | SERIAL 00000000-03042730 | |
| 2 | | 47403 | SHAFT AND BEARING | 1 | SERIAL 00000000-03042730 | |
| 3 | | 47657 | RING, RETAINING - SHAFT AN | 1 | SERIAL 00000000-03042730 | |
| 4 | 12 | 47683 | WASHER, SHAFT AND BEARIN | 1 | SERIAL 00000000-03042730 | |
| 5 | 26 | 47401 | SEAL, MECHANICAL - SHAFT AI | 1 | SERIAL 00000000-03042730 | |
| 6 | 26 | 47531 | SEAL, FLOATING - SHAFT AND | 1 | SERIAL 00000000-03042730 | |
| 7 | 46 | 47506A 2 | BODY ASSEMBLY, WATER PUM | 1 | SERIAL 00000000-03042730 | |
| 8 | | 47405 | WEAR PLATE | 2 | SERIAL 00000000-03042730 | |
| 9 | | 47529 | INSERT, WATER PUMP BOD | 1 | SERIAL 00000000-03042730 | |
| 10 | 47 | 47519 | IMPELLER | 1 | SERIAL 00000000-03042730 | |
| 11 | 17 | 47526 | PIN, IMPELLER DRIVE | 1 | SERIAL 00000000-03042730 | |
| 12 | | 47497A 1 | COVER ASSEMBLY, WATER PL | 1 | SERIAL 00000000-03042730 | |
| 13 | 23 | 47511 | SLEEVE, WATER PUMP COVE | 2 | SERIAL 00000000-03042730 | |
| 14 | 27 | 47410 | GASKET, WATER PUMP COVE | 6 | SERIAL 00000000-03042730 | |
| 15 | 10 | 28635 | SCREW, WATER PUMP COVE | 6 | SERIAL 00000000-03042730 | |
| 16 | | 47530 | HUB, WATER PUMP PULLEY | 1 | SERIAL 00000000-03042730 | |
| 1 | 46 | 59112A 2 | WATER PUMP ASSEMBLY, COM | 1 | SERIAL 03042731-09999999 | |
| 17 | | 59155 | COVER, WATER PUMP | 1 | SERIAL 03042731-09999999 | |
| 18 | 10 | 28635 | SCREW, COVER TO WATER PL | 6 | SERIAL 03042731-09999999 | |
| 19 | 25 | 59712 | "O" RING, WATER PUMP COVE | 1 | SERIAL 03042731-09999999 | |
| 20 | 19 | 59504 | PLUG, IMPELLER | 1 | SERIAL 03042731-09999999 | |
| 21 | 47 | 59362 | IMPELLER | 1 | SERIAL 03042731-09999999 | |
| 22 | 28 | 56662 | KEY, IMPELLER DRIVE | 2 | SERIAL 03042731-09999999 | |
| 23 | | 59363A 1 | CAM SEGMENT ASSEMBLY | 1 | SERIAL 03042731-09999999 | |
| 24 | 10 | 60777 | SCREW, CAM SEGMENT ATTAI | 1 | SERIAL 03042731-09999999 | |
| 25 | | 59503 | WEAR PLATE, IMPELLER | 1 | SERIAL 03042731-09999999 | |
| 26 | 23 | 47511 | SLEEVE, WATER PUMP | 2 | SERIAL 03042731-09999999 | |
| 27 | 26 | 23300 | OIL SEAL, WATER PUMP SHAF | 2 | SERIAL 03042731-09999999 | |
| 28 | 30 | 20861 | BALL BEARING, WATER PUMP | 2 | SERIAL 03042731-09999999 | |
| 29 | | 59501 | SHAFT, WATER PUMP | 1 | SERIAL 03042731-09999999 | |
| 30 | 53 | 23720 | RING, SNAP - BALL BEARING R | 1 | SERIAL 03042731-09999999 | |
| 31 | 26 | 59564 | OIL SEAL, WATER PUMP SHAF | 1 | SERIAL 03042731-09999999 | |
| 32 | | 47530 | HUB, WATER PUMP PULLEY | 1 | SERIAL 03042731-09999999 | |
| 33 | | 52822 | PULLEY, WATER PUMP | 1 | SERIAL 00000000-03042730 | |
| 33 | | 59762 | PULLEY, WATER PUMP | 1 | SERIAL 03042731-09999999 | |
| 34 | 10 | 20705 | SCREW, WATER PUMP PULLEY | 4 | | |
| 35 | 13 | 39107 | LOCKWASHER, WATER PUMP P | 4 | | |
| 36 | 32 | 60442 | HOSE, WATER PUMP TO OIL CO | 1 | | |
| 37 | 54 | 32780 | CLAMP, HOSE TO WATER PUMP | 2 | | |
| 38 | 57 | 39756 | BELT, WATER PUMP | 1 | SERIAL 00000000-02312964 | |
| 38 | 57 | 48121 | BELT, WATER PUMP | 1 | SERIAL 02312965-03042730 | |