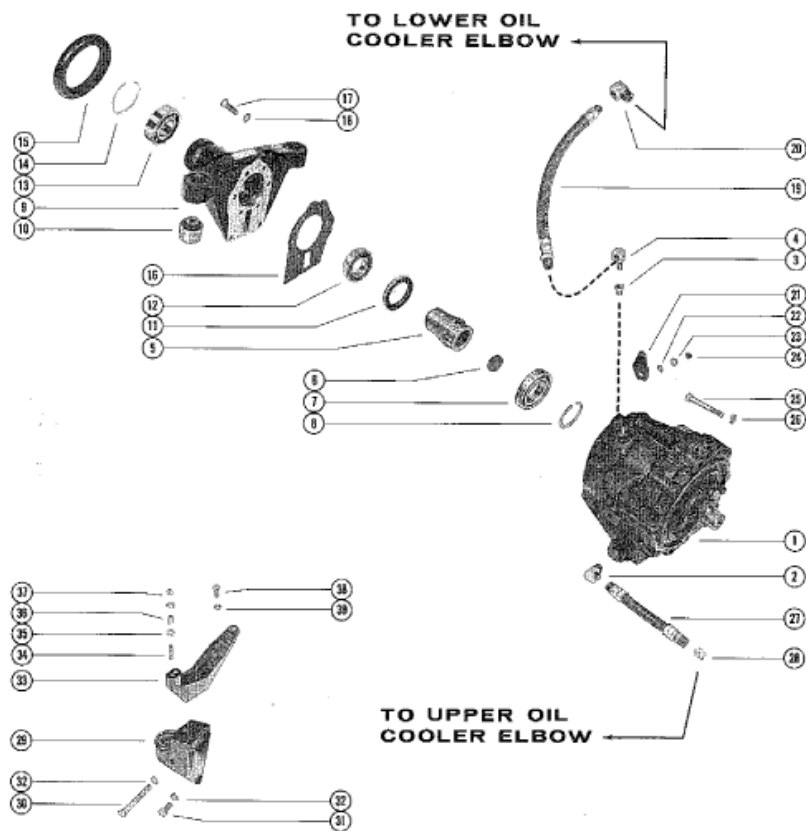


**STERN DRIVE**



Parts List						
Ref	Class	Part	Description	Qty	Comment	Footnote
1		47753A	6 TRANSMISSION ASSEMBLY	1		
2	22	47629	ELBOW, TRANSMISSION TO OIL C	1		
3	23	36159	BUSHING, REDUCER - TRANSMISSION	1		
4	22	57631	ELBOW, TRANSMISSION TO OIL C	1		
5		57758A	2 ENGINE COUPLING ASSEMBLY	1		
6	19	47463	PLUG, EXPANSION - ENGINE	1		
7	30	47470	BALL BEARING, ENGINE COUPLING	1		
8	53	47469	RING, SNAP - BALL BEARING	1		
9		57761A	1 TAILSTOCK ASSEMBLY, BEARING	1		
10		35852	MOUNT, RUBBER - TAILSTOCK	2		
11	26	47465	OIL SEAL, TAILSTOCK	1		
12	30	57762	BALL BEARING, TAILSTOCK	1		
13	30	32537	BALL BEARING, TAILSTOCK	1		
14	53	54481	RING, SNAP - BALL BEARING TAILSTOCK	1		
15	25	54067	SEAL, TAILSTOCK	1		
16	27	47903	GASKET, TAILSTOCK	1		
17	10	57900	SCREW, TAILSTOCK TO TRANSMISSION	6		
17	10	54847	SCREW, TAIL STOCK TO TRANSMISSION	2		
18	13	30381	LOCKWASHER, TAILSTOCK SCREW	8		
19	32	47516	4 HOSE, TRANSMISSION TO OIL COOLER	1		
20	22	47630	ELBOW, TRANSMISSION HOSE	1		
21		47472	LEVER, SHIFT - TRANSMISSION	1		
22	12	20722	WASHER, SHIFT LEVER TO TRANSMISSION	1		
23	13	26993	LOCKWASHER, SHIFT LEVER TO TRANSMISSION	1		
24	11	20083	NUT, SHIFT LEVER TO TRANSMISSION	1		
25	10	47724	SCREW, TRANSMISSION TO ENGINE	6		
26	13	32993	LOCKWASHER, TRANSMISSION SCREW	6		
27	32	47516	3 HOSE, TRANSMISSION TO OIL COOLER	1		
28	22	47630	ELBOW, HOSE TO OIL COOLER	1		
29		47336A	1 BRACKET ASSEMBLY, TRANSMISSION	1		
30	10	38197	SCREW, MOUNT BRACKET TO TRANSMISSION	1		
31	10	47462	SCREW, MOUNT BRACKET TO TRANSMISSION	1		
32	13	32993	LOCKWASHER, MOUNT BRACKET TO TRANSMISSION	2		
33		47335A	1 BRACKET ASSEMBLY, SHIFT SUPPORT	1		
34	16	33526	STUD, SHIFT SUPPORT BRACKET	1		
35	12	21631	WASHER, SHIFT SUPPORT BRACKET	2		
36	23	31866	SPACER, SHIFT SUPPORT BRACKET	1		
37	11	20586	NUT, SHIFT SUPPORT BRACKET	1		
38	10	35386	SCREW, SHIFT SUPPORT BRACKET	3		
39	13	26421	LOCKWASHER, SHIFT SUPPORT BRACKET	3		