



# Count on Cummins

Marine Diesel Engines



# Power Your Life on the Water

With propulsion systems and generator sets that are clean, efficient, powerful, and reliable. And the most extensive support network on the globe. All fueled by over 90 years of innovation and expertise.

When you count on your boat, count on Cummins.





# Count on Performance

With Cummins, you're getting the most advanced propulsion technology. Engines that run quieter. Burn cleaner. Sip fuel more responsibly. Take up less space. And just keep humming along, hour after hour.

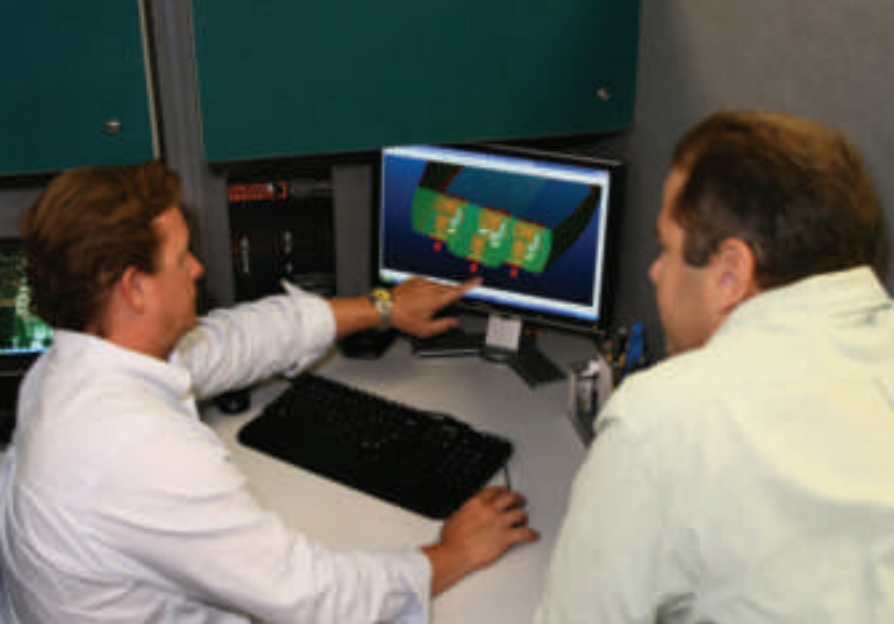
## **More Punch, No Penalty**

What gives? Nothing, actually. Cummins delivers more of the performance you rely on. More torque for better acceleration – to get you on plane quicker. And optimized fuel economy at cruising speeds, where you run your engine the most. All from the smallest engine possible. It's called power density. And it's all about getting more from less.

Cummins aboard means complete confidence in an engine you know you can count on – to get you wherever you want to go.







# Built for Each Other

Cummins thinks beyond  
the engine to what it drives.  
Your boat.

## **Seamless Integration. Watertight Performance.**

Our knowledge of naval architecture and close partnerships with boat builders create a watertight relationship between engine design and vessel design. One that ensures Cummins-equipped boats achieve optimal performance, handling, and fuel economy.

This seamless integration gives you advantages like engine control systems that can provide features such as autopilot and SkyHook.™ So you can enter a set of waypoints for your favorite fishing spots or daily destinations – then relax and let autopilot be your guide.

## **Auxiliary Power Player**

Cummins Onan Marine generators are the industry's leading auxiliary power solution. They also mesh seamlessly with your Cummins engine and instrumentation, making it that much easier to manage your boat.





It's no accident that our engine and your boat work together perfectly. Each was designed with the other in mind.







# Depend on Support

There's one thing you don't want to get away from when you get away from it all. Support: when you need it, where you need it.

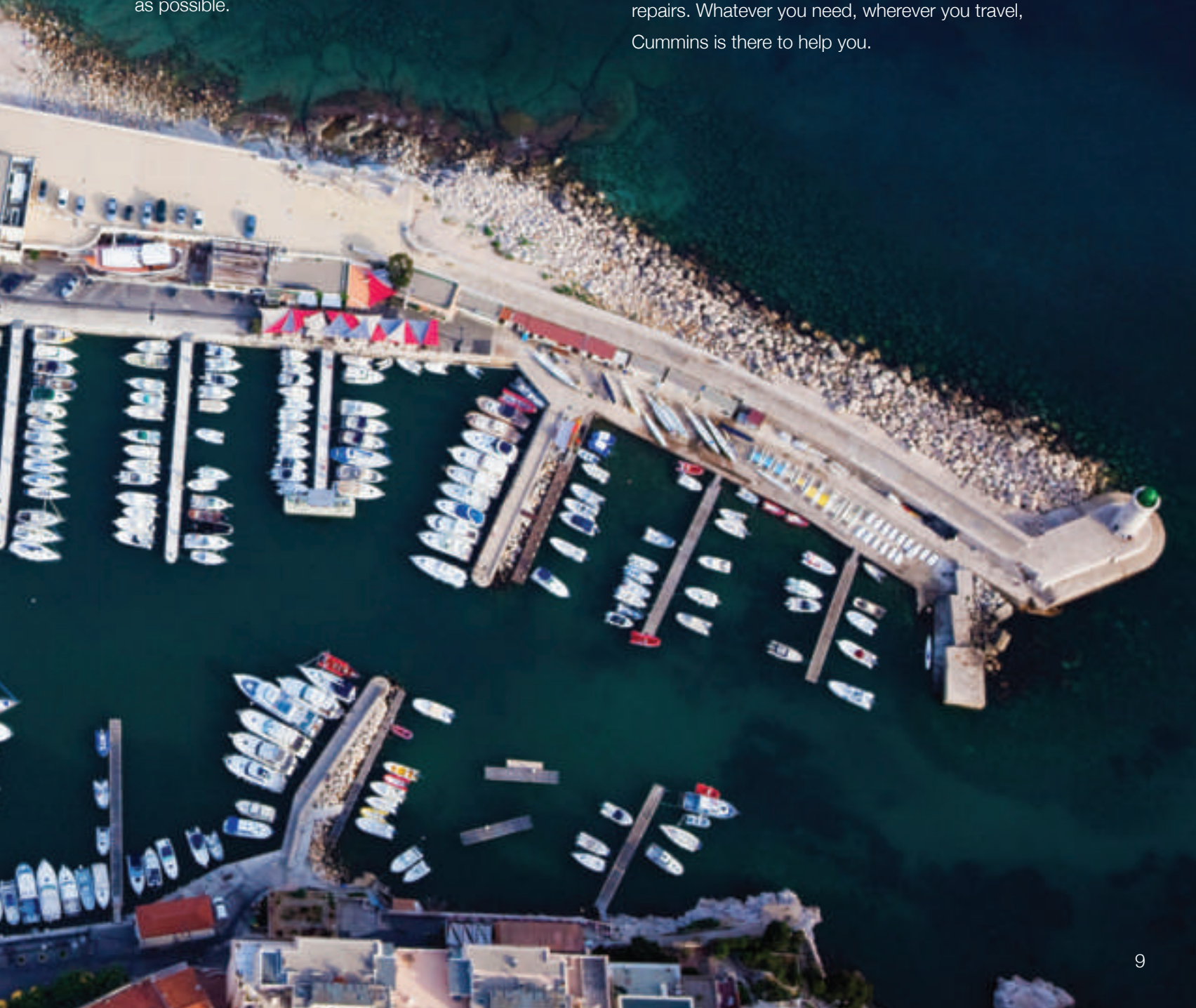
## **It's Not Just a Boat, It's Your Home Away from Home**

Cummins understands. That's why we've invested heavily in a worldwide distribution network. Professionals you can count on to quickly and accurately diagnose any problem, get the parts, and make the repair. So you're back on board, and back on the water, as soon as possible.

## **Cummins Customer Support is There**

Cummins Marine products are supported in every major marina around the world. Our global network encompasses thousands of authorized distributor and dealer service locations.

Routine maintenance. Replacement parts. Emergency repairs. Whatever you need, wherever you travel, Cummins is there to help you.



# More than Free Time



# Worry-Free Time

Advanced technology. Superior reliability. Seamless integration with your boat. Cummins equips you with all three, plus a worldwide support network. Whether you're circling the lake or the globe, you can go the distance with Cummins. Count on it.

## **Comprehensive Coverage**

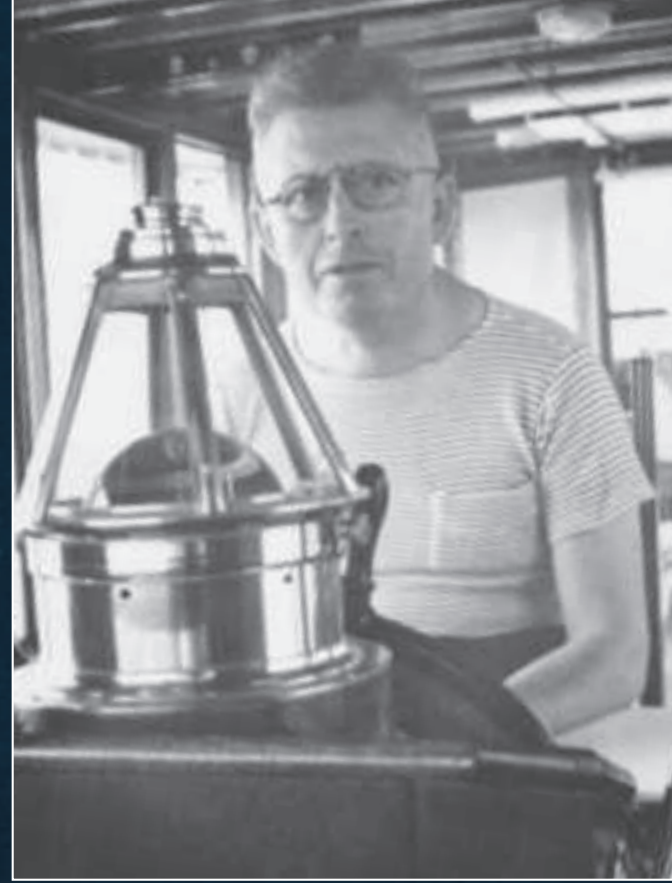
Cummins engines and generators are backed by a comprehensive warranty that's honored everywhere you travel. We also offer extended warranty options that cover major components for up to six years.

Wherever you venture, worry won't be coming along for the ride.





**Clessie Cummins**, founder of Cummins Inc., at the helm in 1940.



# Trust Our Commitment

Cummins has a proud 90-year history of leadership in marine propulsion. But we refuse to rest on it. Like our customers, we prefer to keep moving forward. Expanding our product range. Investing in the newest, cleanest, most efficient diesel technology. Elevating the art of customer care. Just like we've been doing for the past 90 years – all to help you focus on the voyage ahead.



More than a million  
Cummins engines rolled  
off production lines and  
into service this year.

We stand behind every  
single one. Including yours.



**Cummins Inc.**  
**4500 Leeds Avenue - Suite 301**  
**Charleston, SC 29405-8539**  
**U.S.A.**

Phone: 843-745-2726  
Fax: 843-745-1616  
Internet: [cummins.com](http://cummins.com)

Bulletin 4087288 Printed in U.S.A. 10/12  
©2012 Cummins Inc.



# QSB6.7

## QUANTUM SERIES ENGINE

### Features

**Fuel System:** Bosch HPCR with hardened components to safely operate alternative fuels such as kerosene and JP8/JP5

**Lubrication System:** Front mounted filters, oil service interval increased to 500 hours if use ULSD fuels

**Electrical System:** 12v and 24v, isolated and non-isolated, systems available

**Air Intake System:** New Walker air filter significantly reduces noise

**Seawater System:** Optional dry run capability

**Emissions:** EPA Tier 3, RCD and IMO2

**Breather System:** Closed Crankcase Ventilation available on all ratings

### Engine Overview

- Unmatched performance driven through a perfectly matched turbocharger and a new 24-valve cylinder head that delivers industry-leading power density
- Quiet operation, including an 80-percent reduction in noise at idle, is one of the many benefits from the common-rail fuel system
- Enhanced sociability from the high-pressure common-rail design virtually eliminates smoke and improves the whole boating experience
- Maximize vessel performance and access comprehensive vessel diagnostic information via SmartCraft® electronics
- Peace of mind delivered by the Cummins Captain's Briefing and global service network

### Engine Specifications

Configuration	In-line 6-cylinder, 4-stroke diesel
Bore & Stroke	107 mm x 124 mm (4.21 in x 4.88 in)
Displacement	6.7 L (408 in <sup>3</sup> )
Aspiration	Turbocharged / Aftercooled
Rotation	Counterclockwise facing flywheel



### Power Ratings

Rating	kW	MHP	BHP	Rated RPM	Max Torque		Emissions
					N-m	RPM	
HO/GS	405	550	542	3300	1695	2000	EPA Tier 3, IMO II, RCD, EU Stage IIIa
HO/GS	353	480	473	3300	1580	2000	
HO/ID	312	425	419	3000	1424	2000	
HO/ID	279	380	375	3000	1335	2000	
ID	261	355	349	2800	1150	2000	
HO	261	355	350	3000	1150	2000	
HO/MCD	224	305	301	2600	1174	1700	
HO/HD	184	250	247	2600	983	1500	
ID	169	230	227	3000	691	1200	

Ratings and specifications subject to change without notice. Not responsible for typographical errors.



## Fuel Consumption (Prop Curve)

Rating	Cooling type	kW	MHP	BHP	Fuel Consumption		Emissions
					Rated	Cruise	
					L/hr(gal/hr)	L/hr(gal/hr)	
HO/GS	HX	405	550	542	110.2(29.1)	80.6(21.3)	EPA Tier 3, IMO II, RCD, EU Stage IIIa
HO/GS	HX	353	480	473	96.2(25.4)	71.2(18.8)	
HO/ID	HX	312	425	419	82.2(21.7)	60.4(15.9)	
HO/ID	HX	279	380	375	73.9(19.5)	55.2(14.6)	
ID	HX	261	355	349	68.1(18.0)	56(14.8)	
HO	HX	261	355	350	67.6(17.9)	51.9(13.7)	
HO/MCD	HX	224	305	301	55.6(14.7)	45.8(12.1)	
HO/HD	HX	184	250	247	46.9(12.4)	38.4(10.1)	
ID	HX	169	230	227	47.3(12.5)	33.8(8.9)	

Fuel consumption data represents performance along a 2.7 fixed pitch propeller curve (for HO, ID, MCD, 3.0 for HD and CON ratings). Fuel consumption is based on fuel of 35° API gravity at 16°C (60°F) having an LHV of 42,780 KJ/KG (18,390 BTU/lb) when used at 29°C (85°F) and weighing 838.9 g/liter (7.001 lb/US gal). Observed horsepower is certified within ±5% of rated horsepower. Consult your local Cummins professional for further information.

## Engine Dimensions

Length		Width		Height		Weight (Dry)*	
mm	in	mm	in	mm	in	kg	lb
1097	43.1	910	35.8	857	33.74	659	1450

\*Length measured from back of flywheel to engine front. Weight does not include customer specific options (alternator, starter, engine mounts).

## Available Accessories

**Engine Controls:** Digital Throttle and Shift

**Instrumentation:** SmartCraft® 2.5 digital displays standard with Zeus®, optional as inboard

**Vessel System Integration:** SmartCraft® 2.5 monitors fluid level, vessel range, depth, vessel speed, rudder position, temperatures and more

## Ratings Definitions

**Heavy Duty (HD):** Intended for nearly continuous use in variable load applications, where full power is limited to eight hours out of every ten hours of operation. Also, reduced power operation must be at or below cruise rpm, which is 200 rpm below the maximum rated speed. This rating is for applications operating less than 5000 hours per year.

**Medium Continuous (MD):** Intended for moderate use in variable load applications, where full power is limited to six hours out of every twelve hours of operation. Also, reduced power operation must be at or below cruise rpm, which is 200 rpm below the maximum rated speed. This rating is for applications operating less than 3000 hours per year.

**Intermittent (ID):** Intended for intermittent use in variable load applications, where full power is limited to two hours out of every eight hours of operation. Also, reduced power operation must be at or below cruise rpm, which is 200 rpm below the maximum rated speed. This rating is for applications operating less than 1500 hours per year.

**Government Service (GS):** Intended for infrequent use in variable load applications, where full power is limited to one hour out of every eight hours of operation. Also, reduced power operation must be at or below cruise speed (rpm). Cruise speed (rpm) is dependent on the engine rated speed (rpm), Refer to Table 1 below. For applications operating less than 500 hours per year. Engines with this rating are restricted to non-revenue generating government service propulsion applications. It is not to be used in any revenue generating commercial applications, nor is it to be used in recreational/pleasure applications

**High Output (HO):** Intended for infrequent use in variable load applications, where full power is limited to one hour out of every eight hours of operation. Also, reduced power operation must be at or below cruise speed (rpm). Cruise speed (rpm) is dependent on the engine rated speed (rpm), Refer to Table 1 below. For applications operating less than 500 hours per year. Engines with this rating are intended for powering recreational/pleasure use vessels only. Commercial use is defined as any work or employment related use of the product, or any use of the product which generates income, for any part of the warranty period, even if the product is only occasionally used for such purposes.

**Rating Conditions:** Declared power ratings are based upon ISO 15550 reference conditions/ air pressure of 100kPa (29.612 in Hg) air temperature of 25° C (77°F) and 30% relative humidity. Propeller Shaft Power represents the net power available after typical reverse/reduction gear losses and is 97% of rated power. Power rated in accordance with IMCI procedures.

Table 1

Rated Speed	Cruise Speed (reduction from rated)
2000 to 2800 rpm	200 rpm
2801 to 3500 rpm	300 rpm
3501 to 4500 rpm	400 rpm

*Ratings and specifications subject to change without notice. Not responsible for typographical errors.*



Cummins Inc.  
4500 Leeds Avenue - Suite 301  
Charleston, SC 29405-8539  
U.S.A.

Bulletin #4087252 Printed in U.S.A. Rev. 10/13  
©2013 Cummins Inc.



# QSC8.3

## QUANTUM SERIES ENGINE

### Features

**Fuel System:** Cummins High-Pressure Common-Rail; handed spin-on engine mounted fuel filter

**Lubrication System:** Handed spin-on engine mounted lube filter, cast aluminum oil pan

**Electrical System:** 12-volt and 24-volt systems available

**Coolant System:** Sea water heat exchanger cooling system

**Emissions:** EPA Tier 3, IMOII, and RCD certified, EIAPP and RRR certificate options available

### Engine Overview

- Unmatched performance from industry-leading power density on this four-valve-per-cylinder engine
- Increased durability from innovative engine design characteristics
- Improved fuel economy and sociability from the high-pressure common-rail fuel system
- Maximize vessel performance and access comprehensive vessel diagnostic information via SmartCraft® electronics
- Peace of mind delivered by the Cummins Captain's Briefing and global service network

### Engine Specifications

Configuration	In-line 6-cylinder, 4-stroke diesel
Bore & Stroke	114 mm x 135 mm (4.49 in x 5.31 in)
Displacement	8.3 L (505 in <sup>3</sup> )
Aspiration	Turbocharged / Aftercooled
Rotation	Counterclockwise facing flywheel



### Power Ratings

Rating	Cooling type	kW	MHP	BHP	Rated RPM	Max Torque		Emissions
						N-m	RPM	
HO	HX	441	600	592	3000	1799	1800	EPA Tier 3, IMO II, RCD, EU Stage IIIa
GS	HX	441	600	592	2800	1799	1800	
HO	HX	4	550	543	3000	1799	1800	
HO/ID	HX	368	500	493	2600	1799	1800	
HO	HX	441	600	593	3000	1799	1800	EPA Tier 2, IMO II, RCD, EU Stage IIIa
GS	HX	441	600	593	3000	1799	1800	
HO	HX	404	550	543	3000	1799	1800	
HO/ID	HX	368	500	493	2600	1799	1800	

Ratings and specifications subject to change without notice. Not responsible for typographical errors.

## Fuel Consumption (Prop Curve)

Rating	kW	MHP	BHP	Fuel Consumption		Emissions
				Rated	L/hr(gal/hr)	
HO	441	600	592	122.7(32.4)	88.8(23.4)	EPA Tier 3, IMO II, RCD, EU Stage IIIa
GS	441	600	592	123(32.4)	85.4(22.5)	
HO	4	550	543	113(29.9)	82.2(21.7)	
HO/ID	368	500	493	96(25.4)	76.2(20.1)	
HO/GS	441	600	593	123.1(32.5)	83.7(22.1)	EPA Tier 2, IMO II, RCD, EU Stage IIIa
HO	404	550	543	112.7(29.8)	80.3(21.2)	
HO/ID	368	500	493	96.1(25.4)	76.1(20.1)	

Fuel consumption data represents performance along a 2.7 fixed pitch propeller curve (for HO, ID, MCD, 3.0 for HD and CON ratings). Fuel consumption is based on fuel of 35° API gravity at 16°C (60°F) having an LHV of 42,780 KJ/KG (18,390 BTU/lb) when used at 29°C (85°F) and weighing 838.9 g/liter (7.001 lb/US gal). Observed horsepower is certified within ±5% of rated horsepower. Consult your local Cummins professional for further information.

## Engine Dimensions

Length		Width		Height		Weight (Dry)*	
mm	in	mm	in	mm	in	kg	lb
1174	46.2	839	33	982	38.7	896	1975

\*Does not include exhaust connection. Weights vary by rating.

## Available Accessories

**Engine Controls:** Digital Throttle and Shift; Electronic Throttle and Shift (ETS) and optional potentiometer for mechanical controls

**Instrumentation:** SmartCraft® 2.5 digital displays and/or analog gauges provide data on engine speed, oil pressure, engine load and more

**Vessel System Integration:** SmartCraft® 2.5 monitors fluid level, vessel range, depth, vessel speed, rudder position, temperatures and more



## Ratings Definitions

**Intermittent (ID):** Intended for intermittent use in variable load applications, where full power is limited to two hours out of every eight hours of operation. Also, reduced power operation must be at or below cruise rpm, which is 200 rpm below the maximum rated speed. This rating is for applications operating less than 1500 hours per year.

**Government Service (GS):** Intended for infrequent use in variable load applications, where full power is limited to one hour out of every eight hours of operation. Also, reduced power operation must be at or below cruise speed (rpm). Cruise speed (rpm) is dependent on the engine rated speed (rpm), Refer to Table 1 below. For applications operating less than 500 hours per year. Engines with this rating are restricted to non-revenue generating government service propulsion applications. It is not to be used in any revenue generating commercial applications, nor is it to be used in recreational/pleasure applications

**High Output (HO):** Intended for infrequent use in variable load applications, where full power is limited to one hour out of every eight hours of operation. Also, reduced power operation must be at or below cruise speed (rpm). Cruise speed (rpm) is dependent on the engine rated speed (rpm), Refer to Table 1 below. For applications operating less than 500 hours per year. Engines with this rating are intended for powering recreational/pleasure use vessels only. Commercial use is defined as any work or employment related use of the product, or any use of the product which generates income, for any part of the warranty period, even if the product is only occasionally used for such purposes.

**Rating Conditions:** Declared power ratings are based upon ISO 15550 reference conditions/ air pressure of 100kPa (29.612 in Hg) air temperature of 25° C (77°F) and 30% relative humidity. Propeller Shaft Power represents the net power available after typical reverse/reduction gear losses and is 97% of rated power. Power rated in accordance with IMCI procedures.

Table 1

Rated Speed	Cruise Speed (reduction from rated)
2000 to 2800 rpm	200 rpm
2801 to 3500 rpm	300 rpm
3501 to 4500 rpm	400 rpm

Ratings and specifications subject to change without notice. Not responsible for typographical errors.



Cummins Inc.  
4500 Leeds Avenue - Suite 301  
Charleston, SC 29405-8539  
U.S.A.



# QSL9

## QUANTUM SERIES ENGINE

### Features

**Fuel System:** Cummins XPI fuel System; handed spin-on Fleetguard fuel filter

**Lubrication System:** Handed spin-on Fleetguard lube filter

**Electrical System:** 12-volt and 24-volt systems available

**Coolant System:** Sea water heat exchanger cooling system; Keel cooled system available

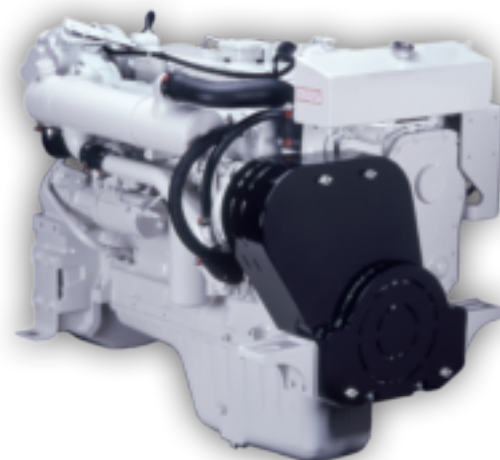
**Emissions:** EPA Tier 3, IMOII, and RCD Certified

### Engine Overview

- Dependability and long life proven through thousands of hours of reliable commercial and trawler operation
- Clean, quiet operation with virtually no startup smoke from the high-pressure common-rail fuel system
- Excellent fuel economy for long range cruising
- Peace of mind delivered by the Cummins Captain's Briefing and global service network

### Engine Specifications

Configuration	In-line 6-cylinder, 4-stroke diesel
Bore & Stroke	114 mm x 145 mm (4.49 in x 5.71 in)
Displacement	8.9 L (542 in <sup>3</sup> )
Aspiration	Turbocharged / Aftercooled
Rotation	Counterclockwise facing flywheel



### Engine Dimensions

Length		Width		Height		Weight (Dry)*	
mm	in	mm	in	mm	in	kg	lb
1174	46.2	842	33.2	1086	42.8	9.7	2000

\*Does not include exhaust connection. Weights vary by rating.

### Power Ratings

Rating	kW	MHP	BHP	Rated RPM	Max Torque		Emissions
					N-m	RPM	
HO/MCD	302	410	405	2100	1575	1400	EPA Tier 3, IMO II, RCD, EU Stage IIIa
HD	246	335	330	1800	1575	1400	
CO	213	290	285	1800	1443	1300	
HO/MCD	298	405	400	2100	1619	1400	IMO II, RCD, EU Stage IIIa
HO/HD	243	330	326	1800	1553	1400	
HO/CD	209	285	281	1800	1332	1400	

Ratings and specifications subject to change without notice. Not responsible for typographical errors.

## Fuel Consumption (Prop Curve)

Rating	Cooling type	kW	MHP	BHP	Fuel Consumption		Emissions
					Rated (L/hr(gal/hr))	Cruise L/hr(gal/hr)	
MCD	HX	302	410	405	79(20.8)	39.4(10.4)	EPA Tier 3, IMO II, RCD, EU Stage IIIa
HO	HX	302	410	405	78.7(20.8)	43.2(11.4)	
HD	HX	246	335	330	63(16.7)	43.7(11.5)	
CO	HX	213	290	285	53(14.1)	38(10)	
HO/MCD	HX	298	405	400	80(21.1)	41.4(10.9)	IMO II, RCD, EU Stage IIIa
HO/HD	HX	243	330	326	62(16.3)	44.3(11.7)	
HO/CD	HX	209	285	281	54(14.4)	37.9(10)	

Fuel consumption data represents performance along a 2.7 fixed pitch propeller curve (for HO, ID, MCD, 3.0 for HD and CON ratings). Fuel consumption is based on fuel of 35° API gravity at 16°C (60°F) having an LHV of 42, 780 KJ/KG (18,390 BTU/lb) when used at 29°C (85°F) and weighing 838.9 g/liter (7.001 lb/US gal). Observed horsepower is certified within ±5% of rated horsepower. Consult your local Cummins professional for further information.

### Available Accessories

**Air Intake System:** Light duty or servicable type air cleaner

**Engine Controls:** Digital Throttle and Shift; Electronic Throttle and Shift (ETS) and optional potentiometer for mechanical controls

**Instrumentation:** SmartCraft® 2.5 digital displays and/or analog gauges provide data on engine speed, oil pressure, engine load and more

**Vessel System Integration:** SmartCraft® 2.5 monitors fluid level, vessel range, depth, vessel speed, rudder position, temperatures and more

**Accessory Drive Pulley:** Single and dual groove for FPTO

**Hydraulic pump drive:** SAE A or SAE B flange

**Wet and Dry exhaust connections**



### Ratings Definitions

**Continuous (CD):** Intended for use in applications requiring uninterrupted and unlimited service at full power.

**Heavy Duty (HD):** Intended for nearly continuous use in variable load applications, where full power is limited to eight hours out of every ten hours of operation. Also, reduced power operation must be at or below cruise rpm, which is 200 rpm below the maximum rated speed. This rating is for applications operating less than 5000 hours per year.

**Medium Continuous (MD):** Intended for moderate use in variable load applications, where full power is limited to six hours out of every twelve hours of operation. Also, reduced power operation must be at or below cruise rpm, which is 200 rpm below the maximum rated speed. This rating is for applications operating less than 3000 hours per year.

**Intermittent (ID):** Intended for intermittent use in variable load applications, where full power is limited to two hours out of every eight hours of operation. Also, reduced power operation must be at or below cruise rpm, which is 200 rpm below the maximum rated speed. This rating is for applications operating less than 1500 hours per year.

**High Output (HO):** Intended for infrequent use in variable load applications, where full power is limited to one hour out of every eight hours of operation. Also, reduced power operation must be at or below cruise speed (rpm). Cruise speed (rpm) is dependent on the engine rated speed (rpm), Refer to Table 1 below. For applications operating less than 500 hours per year. Engines with this rating are intended for powering recreational/pleasure use vessels only. Commercial use is defined as any work or employment related use of the product, or any use of the product which generates income, for any part of the warranty period, even if the product is only occasionally used for such purposes.

**Rating Conditions:** Declared power ratings are based upon ISO 15550 reference conditions/ air pressure of 100kPa (29.612 in Hg) air temperature of 25° C (77°F) and 30% relative humidity. Propeller Shaft Power represents the net power available after typical reverse/reduction gear losses and is 97% of rated power. Power rated in accordance with IMCI procedures.

Table 1

Rated Speed	Cruise Speed (reduction from rated)
2000 to 2800 rpm	200 rpm
2801 to 3500 rpm	300 rpm
3501 to 4500 rpm	400 rpm

*Ratings and specifications subject to change without notice.  
Not responsible for typographical errors.*



Cummins Inc.  
4500 Leeds Avenue - Suite 301  
Charleston, SC 29405-8539  
U.S.A.

Bulletin #4087254 Printed in U.S.A. Rev. 10/13  
©2013 Cummins Inc.



# QSM11

## QUANTUM SERIES ENGINE

### Features

**Fuel System:** Cummins Select, a full authority electronic unit injection fuel system optimizes combustion for increased engine performance and fuel efficient operation

**Lubrication System:** Cast aluminum oil pan designed to resist corrosion, spin-on Fleetguard oil filters

**Electrical System:** 12-volt and 24-volt systems available, marine grade wiring harness and instrument panels

**Cooling System:** Low profile, heat exchanger configuration with standard closed crankcase ventilation system

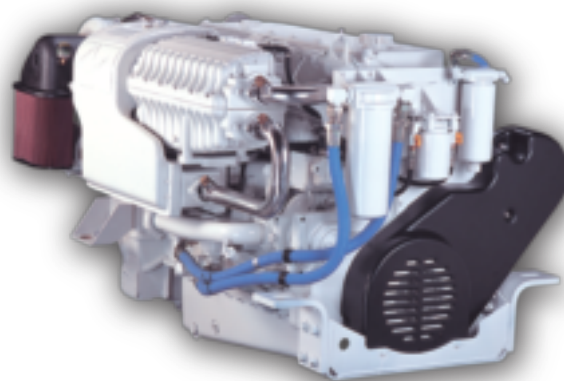
**Air System:** Cummins Turbo Technologies turbocharger optimized for marine applications. Marine grade air filter. Large capacity sea water aftercooler

**Emissions Certified:** EPA Tier 3, IMOII, and RCD certified

**Marine Society Certification:** ABS, LR, DNV, BV, CCS, KR approval certificates available on commercial ratings

### Engine Overview

- Proven acceleration and torque performance in thousands of boats from this dependable, four-valve-per-cylinder workhorse
- Quiet and fuel efficient operation from innovative four-cycle design
- Excellent, virtually smoke-free sociability ensures a pleasurable boating experience
- Extended engine life from heavy-duty design elements
- Peace of mind delivered by the Cummins Captain's Briefing and global service network



### Engine Specifications

Configuration	In-line 6-cylinder, 4-stroke diesel
Bore & Stroke	125 mm x 147 mm (4.92 in x 5.79 in)
Displacement	10.8 L (661 in <sup>3</sup> )
Aspiration	Turbocharged / Aftercooled
Rotation	Counterclockwise facing flywheel

### Power Ratings

Rating	Cooling type	kW	MHP	BHP	Rated RPM	Max Torque		Emissions
						N-m	RPM	
HO/GS	HX	526	715	705	2500	2373	1700	EPA Tier 3, IMO II, and RCD
HO/GS	HX	493	670	661	2300	2373	1700	
HO/ID	HX	449	610	602	2300	2135	1700	
HO/GS	HX	526	715	705	2500	2373	1700	IMO II, and RCD
HO/GS	HX	493	670	661	2300	2373	1700	
HO	HX	474	645	636	2300	2373	1700	
HO/ID	HX	449	610	602	2300	2373	1700	IMO II, RCD, EU Stage IIIa
HO/MD	HX	386	455	450	2100	1966	1400	
HO/HD	HX	298	405	400	2100	1822	1300	
HO/CD	HX	261	355	350	1800	1695	1200	
HO/CD	HX	220	300	295	1800	1573	1200	

Ratings and specifications subject to change without notice. Not responsible for typographical errors.

## Fuel Consumption

Rating	Cooling type	kW	MHP	BHP	Fuel Consumption		Emissions
					Rated L/hr(gal/hr)	Cruise L/hr(gal/hr)	
HO/GS	HX	526	715	705	142.7(37.7)	102.9(27.2)	EPA Tier 3, IMO II, and RCD
HO/GS	HX	493	670	661	127.9(33.8)	91.0(24.0)	
HO/ID	HX	449	610	602	112(29.7)	82.6(21.8)	
HO/GS	HX	526	715	705	142.7(37.7)	110.2(29.1)	IMO II, and RCD
HO/GS	HX	493	670	661	128(33.8)	93.4(24.7)	
HO	HX	474	645	636	128(33.8)	79.7(21.1)	
HO/ID	HX	449	610	602	117(30.8)	84.3(22.3)	IMO II, RCD, EU Stage IIIa
HO/MD	HX	386	455	450	87.6(23.1)	64.6(17.1)	
HO/HD	HX	298	405	400	75.2(19.9)	56.2(14.8)	
HO/CD	HX	261	355	350	65.3(17.2)	47(12.4)	
HO/CD	HX	220	300	295	55.2(14.6)	40.3(10.6)	

Fuel consumption data represents performance along a 2.7 fixed pitch propeller curve (for HO, ID, MCD, 3.0 for HD and CON ratings). Fuel consumption is based on fuel of 35° API gravity at 16°C (60°F) having an LHV of 42,780 KJ/KG (18,390 BTU/lb) when used at 29°C (85°F) and weighing 838.9 g/liter (7.001 lb/US gal). Observed horsepower is certified within ±5% of rated horsepower. Consult your local Cummins professional for further information.

## Engine Dimensions 715, 670, 645, 610

Length		Width		Height		Weight (Dry)*	
mm	in	mm	in	mm	in	kg	lb
1328	43.15	1079.8	42.5	1012	39.9	1188	2620

\*Does not include exhaust connection. Weights vary by rating. Length to flywheel housing.

## Engine Dimensions 455, 405, 355, 300

Length		Width		Height		Weight (Dry)*	
mm	in	mm	in	mm	in	kg	lb
1289.7	50.78	973.7	38.34	1142.8	44.99	1184	2610

\*Does not include exhaust connection. Weights vary by rating.

## Available Accessories

**Engine Controls:** Digital Throttle and Shift; Electronic Throttle and Shift (ETS) and optional potentiometer for mechanical controls

**Instrumentation:** SmartCraft® 2.5 digital displays and/or analog gauges provide data on engine speed, oil pressure, engine load and more

**Vessel System Integration:** SmartCraft® 2.5 monitors fluid level, vessel range, depth, vessel speed, rudder position, temperatures and more

**Accessory Drive Pulley:** Belt or gear driven

**Hydraulic Pump Drive:** SAE A or SAE B flange Wet and Dry Exhaust Connections



## Ratings Definitions

**Continuous (CD):** Intended for use in applications requiring uninterrupted and unlimited service at full power.

**Heavy Duty (HD):** Intended for nearly continuous use in variable load applications, where full power is limited to eight hours out of every ten hours of operation. Also, reduced power operation must be at or below cruise rpm, which is 200 rpm below the maximum rated speed. This rating is for applications operating less than 5000 hours per year.

**Medium Continuous (MD):** Intended for moderate use in variable load applications, where full power is limited to six hours out of every twelve hours of operation. Also, reduced power operation must be at or below cruise rpm, which is 200 rpm below the maximum rated speed. This rating is for applications operating less than 3000 hours per year.

**Intermittent (ID):** Intended for intermittent use in variable load applications, where full power is limited to two hours out of every eight hours of operation. Also, reduced power operation must be at or below cruise rpm, which is 200 rpm below the maximum rated speed. This rating is for applications operating less than 1500 hours per year.

**Government Service (GS):** Intended for infrequent use in variable load applications, where full power is limited to one hour out of every eight hours of operation. Also, reduced power operation must be at or below cruise speed (rpm). Cruise speed (rpm) is dependent on the engine rated speed (rpm), Refer to Table 1 below. For applications operating less than 500 hours per year. Engines with this rating are restricted to non-revenue generating government service propulsion applications. It is not to be used in any revenue generating commercial applications, nor is it to be used in recreational/pleasure applications

**High Output (HO):** Intended for infrequent use in variable load applications, where full power is limited to one hour out of every eight hours of operation. Also, reduced power operation must be at or below cruise speed (rpm). Cruise speed (rpm) is dependent on the engine rated speed (rpm), Refer to Table 1 below. For applications operating less than 500 hours per year. Engines with this rating are intended for powering recreational/pleasure use vessels only. Commercial use is defined as any work or employment related use of the product, or any use of the product which generates income, for any part of the warranty period, even if the product is only occasionally used for such purposes.

**Rating Conditions:** Declared power ratings are based upon ISO 15550 reference conditions/ air pressure of 100kPa (29.612 in Hg) air temperature of 25° C (77°F) and 30% relative humidity. Propeller Shaft Power represents the net power available after typical reverse/reduction gear losses and is 97% of rated power. Power rated in accordance with IMCI procedures.

Table 1

Rated Speed	Cruise Speed (reduction from rated)
2000 to 2800 rpm	200 rpm
2801 to 3500 rpm	300 rpm
3501 to 4500 rpm	400 rpm

Ratings and specifications subject to change without notice. Not responsible for typographical errors.



Cummins Inc.  
4500 Leeds Avenue - Suite 301  
Charleston, SC 29405-8539  
U.S.A.



# ReCon

**It isn't a repower option,  
IT'S THE REPOWER SOLUTION.**



Get back on the water fast, at a price you can afford, with the peace of mind that comes with a Cummins solution. ReCon engines offer a combination of reliability, performance, service network, warranty and price that is simply unmatched.

Every ReCon engine is completely disassembled down to the last nut and bolt, thoroughly cleaned, inspected and replaced with new parts as needed. Critical wear parts such as rings, bearings, seals and gaskets are replaced with genuine new Cummins parts. After final assembly, computerized engine test cells guarantee like-new performance.

- Commercial and Recreational engine applications
- A wide variety of engines in stock for fast turnaround
- 100% Genuine new or remanufactured Cummins parts for highest quality
- Exchange packages to replace like Cummins units, Repower packages to replace ANY brand in virtually any boat
- No-hassle core acceptance
- Two-year, 2000-hour warranty on all models (extended coverage plans also available)

## Every Application. Total Confidence.

Give your boat new life: more power, cleaner emissions and better fuel economy. To get ReCon engines in your boat, contact your local Cummins Dealer or Distributor.

## ReCon Engines

PART NO.	DESCRIPTION <i>R indicates Repower content, X indicates Exchange</i>	EMISSIONS
DR6503-RX	4BT T0 M 150/155@2800 ID/HO R	None
DR6056-RX	6BT T0 M 122@1800 S	None
DR6721-RX	6BT T0 M 152@2500 MD R 24V KC	None
DR1505-RX	6BT T0 M 180@2500 MD S 24V	None
DR6512-RX	6BT T1 M 210/220@2600 ID/HO X	IMO Tier I, RCD
DR6055-RX	6BT T1 M 210/220@2600 ID/HO S 24V	IMO Tier I, RCD
DR6500-RX	6BT T1 M 210/220@2600 ID/HO R	IMO Tier I, RCD
DR6472-RX	6BT T1 M 210/220@2600 ID/HO R 24V	IMO Tier I, RCD
DR6746-RX	6BT T1 M 210/220@2600 ID/HO R KC	IMO Tier I, RCD
DR991-RX	6BTA T0 M 250@2600 HO X	None
DR6509-RX	6BTA T1 M 260/270@2600 ID/HO X	IMO Tier I, RCD
DR6510-RX	6BTA T1 M 260/270@2600 ID/HO R	IMO Tier I, RCD
DR6486-RX	6BTA T1 M 260@2600 ID R KC	IMO Tier I, RCD
DR6745-RX	6BTA T0 M 300@2800 HO S 24V	None
DR6488-RX	6BTA T1 M 315/330@2800 ID/HO X	IMO Tier I, RCD
DR6489-RX	6BTA T1 M 315/330@2800 ID/HO R	IMO Tier I, RCD
DR6487-RX	6BTA T1 M 315/330@2800 ID/HO R 24V	IMO Tier I, RCD
DR6502-RX	6BTA T1 M 370@3000 HO X	IMO Tier I, RCD
DR6491-RX	6BTA T1 M 370@3000 HO R	IMO Tier I, RCD
DR6294-RX	6CTA T0 M 300@2500 MD R KC	None
DR6474-RX	6CTA T1 M 430/450@2600 ID/HO X	IMO Tier I, RCD
DR6508-RX	6CTA T1 M 430/450@2600 ID/HO R	IMO Tier I, RCD
DR6473-RX	6CTA T1 M 430/450@2600 ID/HO R 24V	IMO Tier I, RCD
DR1660-RX	BC1 NTA855M T0 350@1800 CD X	None
DR6496-RX	QSB T2 M 380@3000 HO R <i>(DR6496-RX is also deratable to: 355@2800 ID, 330@2800 HO, 305@2600 MD, 230@2600 HD)</i>	EPA Tier 2 Compliant
DR6587-RX	QSB T2 M 480@3400 HO R <i>(DR6587-RX is also deratable to 440@3400 HO)</i>	EPA Tier 2 Compliant
DR6497-RX	QSC T2 M 600@3000 HO R <i>(DR6497-RX is also deratable to: 550@3000 HO, 500@2600 ID)</i>	EPA Tier 2 Compliant
DR6744-RX	QSM11 T2 M 455@2100 MD R 24V KC <i>(DR6744-RX is also deratable to: 405@2100 HD, 355@1800 CD, 300@1800 CD)</i>	EPA Tier 2 Compliant
DR6504-RX	QSM11 T2 M 670@2300 HO X <i>(DR6504-RX is also deratable to: 645@2300 HO, 610@2300 ID)</i>	EPA Tier 2 Compliant
DR6498-RX	QSM11 T2 M 670@2300 HO R <i>(DR6498-RX is also deratable to: 645@2300 HO, 610@2300 ID)</i>	EPA Tier 2 Compliant





# Cummins Zeus® Pod Propulsion

**Unparalleled ease of use, protection, and performance.**

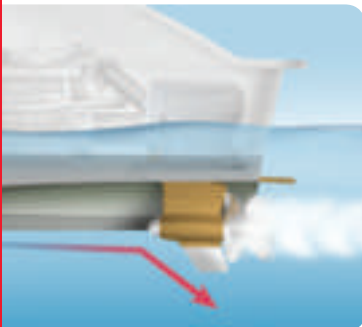
Available in twin, triple, and quadruple installations for the following recreational and commercial applications:

- Power: 710 - 2,860 hp
- Boat Speed: 22 - 45 knots
- Boat Size: 30 - 85 feet



## **Ease of Use**

- Joystick control for fearless docking
- Skyhook® automatically maintains position and heading
- Integrated trim control automatically optimizes running angle
- Integrated autopilot saves money and dash space
- Captain's Briefing gives you a detailed introduction to your new propulsion system



## **Protection**

- Designed for protection from grounding and collision
- Reliable, robust and thoroughly proven
- "MeRL" hotline, a 24/7 concierge service to help Zeus owners with any need
- Two-year all inclusive warranty



## **Performance**

- Reduced noise, vibration and emissions
- Increased efficiency
- Improved maneuverability
- Unmatched power density